

Measuring Tires

Here's a quick easy way to measure tires.

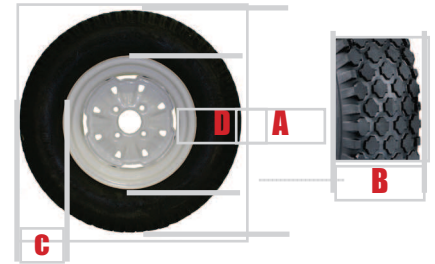
There are 2 basic methods:

"I" separates the first 2 sets of numbers:

Used for smaller industrial tires, the first set of numbers (b) identifies the overall section or width of the tire. The second set of numbers (c) identifies the section height. This is the measurement from the crown of the tire to the bead. In the example, the section height is 3.5" tall. The last number (d) is the rim diameter, which in the example is 4". The overall diameter of the tire is $3.5 + 3.5 + 4 = 11$.

"X" separates the first 2 sets of numbers:

The first number (a) in the example "13" identifies the overall diameter of the tire. The second number (b) "500" is the section or overall width - 5". The last number (d) represents the rim diameter, in this example 6".



VALVE STEM, CAP, CORE

Part # P71001

- Valve stem # 412
- Short
- Replaces *AYP 65139*;
Noma 24167, 024373



Part # P71002

- Valve stem # 413
- Long



CARLISLE TIRES & TUBES

RADIAL TRAIL (Highway Tires)

Part #	Size	Load Range	MTD Dia.	MTD Width	Rim Width	Max Load Capacity	MAX PSI	Tire Weight	Tread Depth (32nds)
5151291	ST145/R12	LRD	21.4	5.8	4.00	1220	65	15.0	8
5198121	ST175/80R13	LRC	24.1	6.7	4.50	1360	50	16.5	10
5193521	ST185/80R13	LRC	24.7	7.1	4.50	1480	50	19.6	10
5198131	ST205/75R14	LRC	26.1	8.0	5.50	1760	50	23.4	10
5198141	ST215/75R14	LRC	26.8	8.2	6.00	1870	50	22.6	10
5198151	ST205/75R15	LRD	27.1	8.0	5.50	1820	50	25.2	10
5198081	ST205/75R15	LRD	27.2	8.0	5.00	2150	65	24.4	10
5198161	ST225/75R15	LRC	28.2	8.8	6.00	2150	50	28.5	10
5198171	ST225/75R15	LRD	28.2	8.8	6.00	2540	65	29.4	10
5198221*	ST225/75R15	LRE	28.2	9.0	6.00	2830	80	30.5	10
5190821	ST235/80R16	LRE	30.8	9.0	6.00	3420-S 3000-D	80	35.0	13
5192991	ST235/85R16	LRE	31.7	9.3	6.00	3640-S 3200-D	80	35.0	13
5193411*	ST235/85R16	LRF	31.9	9.0	6.00	3960-S 3520-D	95	41.2	13
5198241	ST245/75R16	LRD	30.5	9.2	6.00	3000-S 2680-D	65 65	39.4 39.4	13 13



Radial Trail

* Requires HD Wheel S = Single D - Dual

Wheels not included

TURF SAVER

Part#	Size	Ply	MTD Dia.	MTD Width	Rim Width	Max Load Capacity 10 MPH	Tire MAX PSI	Weight
5110091	9 x3.5- 4	2	8.9	3.5	2.5	165	30	2.2
5110111	9x3.5-4	4	8.8	3.6	2.50	260	50	2.2
5110251	4.1-4	2	10.8	3.8	2.50	230	24	2.7
5110271	11x4.00-4	2	11.2	4.2	2.50	215	22	3.0
5110101	11x4-5	2	10.8	4	3.00	210	22	2.8
5110201	13x5-6	2	12.9	4.7	3.50	295	20	4.2
5110211	13x5.00-6	4	12.9	4.8	3.50	440	40	3.4
5111851	13x6.50-6	2	13.2	6.5	4.50	305	14	4.2
5111861	13x6.5-6	4	13.4	6.3	4.50	460	28	5.9
5110301	15x6-6	2	14.5	6.2	4.50	365	14	5.6
5112501	4.80-8	2	16.5	4.8	3.75	435	20	4.9
5110951	16x6.50-8	2	16.1	6.5	5.38	380	12	6.3
5110961	16x6.5-8	4	16.3	6.4	5.38	620	28	5.7
5112001	16x7.50-8	2	16.5	7.1	5.38	475	12	7.6
5110981	18x6.50-8	2	17.2	6.5	5.38	515	14	7.6
5110991	18x6.50-8	4	17.6	6.7	5.38	770	28	6.6
5111021	18x7.50-8	4	18.0	7.5	5.38	835	26	8.7
5110701	18x8.50-8	2	17.8	8.3	7.00	515	10	9.0
5110711	18x8.5-8	4	18	8.2	7.00	815	22	10.3
511084	18x9.50-8	2	17.7	9.5	7.00	695	12	9.8
511081	18x9.50-8	4	18.1	9.6	7.00	1040	24	10.7
511082	18x9.50-8	6	18.5	9.5	7.00	1320	36	11.7
511080	20x8-8	2	19.1	9.1	7.00	600	10	9.6
511101	20x10-8	2	19.6	10.1	7.00	750	10	13
511110	20x8.00-10	2	19.8	8.1	6.00	595	12	10.9
511111	20x8.00-10	4	20.0	7.9	6.00	895	24	11.7
511116	20x10.00-10	4	20.8	8.8	6.00	1225	24	12.7
511140	21x7.00-10	2	20.2	6.9	5.38	685	12	10.1
511050	22x7.50-12	2	21.8	8.1	7.00	675	12	11.6
511051	22x9.50-12	2	21.3	8.9	7.00	870	12	13.0
511090	23x8.50-12	2	23.1	8.5	7.00	705	10	12.9
511100	23x9.50-12	2	23.2	9.5	7.00	920	12	14.2
511120	23x10.50-12	2	22.6	10.5	8.50	890	10	15.2
511121	23x10.50-12	4	22.8	10.3	8.50	1340	20	16.5
511075	24x12.00-12	2	23.0	11.6	8.50	1135	10	18.7



Turf Saver

MULTI-TRAC

Part#	Size	Ply	MTD Dia.	MTD Width	Rim Width	Max Load Capacity 10 MPH	Tire MAX PSI	Weight
574319	15x6.00-6	4	14.4	6.2	4.5	570	30	5.4
574304	16x6.5-8	4	15.8	6.4	5.38	620	28	6.6
574349	16x7.50-8	4	16.4	7.1	5.38	710	24	7.8
574351	18x7.00-8	4	17.9	6.9	5.38	785	26	8.7
5743311	18x8.50-8	4	17.7	8.3	7.00	815	22	9.6
574365	18x8.50-8	8	17.7	8.3	7.00	1220	44	13.2
574332	18x9.50-8	4	18.2	9.0	7.00	1040	24	10.9
574399	18x9.50-8	6	18.2	9.0	7.00	1320	36	11.9
574359	20x8.00-8	2	19.4	8.8	6.50	625	12	11.0
574302	18x9-8	4	18.2	9	7	1040	24	10.9
574341	20x10-8	4	19.6	10	8	1190	22	13



Multi-Trac

Wheels not included

MULTI-TRAC continued

Part #	Size	Ply	MTD Dia.	MTD Width	Rim Width	Max Load Capacity 10 MPH	Tire MAX PSI	Weight
574311	18x8.00-10	4	17.9	7.8	7.00	830	22	10.0
5743U1	18x8.50-10	4	18.1	8.3	7.00	795	22	9.8
5743E5	18x10.50-10	4	17.8	10.1	8.00	990	20	12.2
574318	20x8.00-10	4	20.1	8.1	7.00	895	24	11.4
574362	20x10.00-10	4	19.6	9.6	8.00	1160	22	13.2
574341 NEW!	20x10.00-8	4	19.6	10.0	8.00	1190		
5743C2	20x10.00-10	6	19.6	9.6	8.00	1450	32	17.2
574301	23x8.50-12	4	22.6	8.3	7.00	1115	22	14.6
574372	23x8.50-12	6	22.6	8.3	7.00	1440	34	18.4
574329	23x9.50-12	4	22.7	9.3	7.00	1380	24	15.5
574338	24x9.50-12	4	24.0	9.5	7.00	1430	22	17.2
574367	23x10.5-12	4	22.6	10.4	8.5	1340	20	17
574353	23x10.5-12	6	22.6	10.4	8.5	1760	32	21.7
574352	24x12.00-12	4	23.6	11.5	8.5	1700	20	21
574361	26x12.00-12	4	25.2	12.2	8.50	1780	20	26.1
574377	26x12.00-12	6	25.2	12.2	8.50	2250	30	29.2
574324	24x8.50-14	4	24.0	8.5	7.00	1230	22	17.9
574339	25x8.50-14	4	25.0	8.5	7.00	1320	22	20.1
574371	25x8.50-14	6	25.0	8.5	7.00	1640	32	23.5
574348	27x8.50-15	4	26.6	8.5	7.00	1230	30	25.3
574356	27x8.50-15	6	26.6	8.6	7.00	1570	45	25.6
5743H6	27x10.50-15	4	26.9	10.2	8.50	1320	30	29.0
560362	31x13.50-15	4	31.5	13.2	10.50	2150	20	46.0



Multi-Trac

SUPER TURF

Part #	Size	Ply	MTD Dia.	MTD Width	Rim Width	Max Load Capacity 10 MPH	Tire MAX PSI	Weight
568345	15x6.00-6	2	14.4	6.3	4.50	365	14	4.6
568384	20x10.00-8	2	20.4	9.3	8.00	750	10	13.0



Super Turf

TURF MASTER

Part #	Size	Ply	MTD Dia.	MTD Width	Rim Width	Max Load Capacity 10 MPH	Tire MAX PSI	Weight
5112491	13x6.50-6	4	13.1	6.3	4.50	460	28	5.4
5112521	15x6.00-6	4	14.4	6.2	4.5	570	30	4.7
5112531	15x6.50-8	2	15.0	6.3	5.38	415	14	6.2
5114011	16x6.50-8	4	16.3	6.4	5.38	620	28	7
5114021	16x7.50-8	4	16.4	7.1	5.38	680	24	8.4
5114171	18x6.50-8	4	17.5	6.4	5.38	770	28	7.2
5114041	18x8.50-8	4	18	8.2	7	815	22	10.6
511413	18x9.50-8	4	18.1	9.2	7.00	1040	24	10.7
511405	20x10.00-8	4	19.6	10.4	7.00	1190	22	14.1
511416	20x10.00-10	4	20.0	8.8	7.00	1160	22	13.6
511255	22x11.00-10	4	21.4	10.4	7.00	1485	20	16.1
511433	22x9.50-12	4	21.8	9.1	7.00	1310	24	14.8
511419	23x8.50-12	4	22.9	8.4	7.00	1120	22	15.9



Turf Master

Wheels not included

Tires & Tubes



TURF MASTER continued

Part #	Size	Ply	MTD Dia.	MTD Width	Rim Width	Max Load Capacity 10 MPH	Tire MAX PSI	Weight
511406	23x9.50-12	4	23.6	9.8	7.00	1380	24	19.3
511408	23x10.5-12	4	22.8	10	8.5	1340	20	16.8
511434	24x9.50-12	4	23.6	9.6	7.00	1500	24	19.9
511409	24x12-12	4	23.3	11.4	8.5	1700	20	19.7



Turf Master

ULTRA TRAC

Part #	Size	Ply	MTD Dia.	MTD Width	Rim Width	Max Load Capacity 10 MPH	Tire MAX PSI	Weight
529368	24x13.00-12	4	23.2	13.0	10.5	1730	18	26.3
529387	24x13.00-12	6	22.7	13.0	10.5	2240	28	28.3
529386	26.5x14.00-12	4	26.5	14.4	11.0	2170	18	30.6
5293E6	29x14.00-15	6	29.0	14.0	11.0	1710	30	44.5



Ultra Trac

TURF CHIEF

Part #	Size	Ply	MTD Dia.	MTD Width	Rim Width	Max Load Capacity 10 MPH	Tire MAX PSI	Weight
511797	16x6.50-8	4	16.4	6.9	5.38	620	28	7.2
511701	16x7.50-8	4	16.3	7.7	5.38	680	24	8.3
511791	23x8.50-12	4	23.3	8.8	7.00	1115	22	14.1
511726	23x10.50-12	4	22.3	10.5	8.50	1340	20	16.1
511711	26x12.00	4	26.5	12.7	8.50	1780	20	26.0



Turf Chief

TURF CTR

Part #	Size	Ply	MTD Dia.	MTD Width	Rim Width	Max Load Capacity 10 MPH	Tire MAX PSI	Weight
511501	22x11.00-8	4	22.4	10.8	9	955	10	12.8



Turf CTR

TURF TRAC R/S

Part #	Size	Ply	MTD Dia.	MTD Width	Rim Width	Max Load Capacity 10 MPH	Tire MAX PSI	Weight
575333	11x4.00-8	2	10.6	4.0	3.00	210	22	2.4
575334	13x5.00-6	2	12.6	4.8	3.50	295	20	3.3
575303	13x6.50-6	2	12.8	6.2	4.50	305	14	3.6
575345	15x6.00-6	2	14.4	6.3	4.50	365	14	4.6
575319	15x6.00-6	4	14.4	6.3	4.50	570	30	4.6
575326	16x6.50-8	2	16.0	6.8	5.38	415	14	5.4
575304	16x6.50-8	4	16.0	6.8	5.38	620	28	6.9
575349	16x7.50-8	4	16.0	7.2	5.38	710	24	5.6
575317	18x6.50-8	4	17.6	6.6	5.38	770	28	6.3
560451	18x7.50-8	4	17.6	6.6	5.38	515	14	7.4
5753311	18x8.50-8	4	17.7	8.1	7.00	815	22	7.3
575346	18x9.50-8	2	17.5	9.1	7.00	695	12	6.9
575399	18x9.50-8	6	17.6	8.9	7.00	1320	36	9.6
575359	20x8.00-8	2	19.3	8.2	6.50	625	12	7.0



Turf Trac

Wheels not included

TURF TRAC R/S continued

Part #	Size	Ply	MTD Dia.	MTD Width	Rim Width	Max Load Capacity 10 MPH	Tire MAX PSI	Weight
575341	20x10.00-8	4	19.5	9.9	8.00	1190	22	10.5
575389	20x10.00-8	6	19.5	9.9	8.00	1480	32	11.0
50D397	22.5x10-8	4	22.6	9.6	8.00	1390	22	15.0
5753B7	22.5x10.00-8	4	22.6	9.6	8.00	1390	22	15.0
599020	22x11.00-8	2	21.3	11.2	8.50	955	10	13.6
50D373	25x12.00-9	2	25.9	11.2	9.50	1230	10	17.4
50D3T7	25x12.00-9	2	25.9	11.2	9.5	1820	20	17.9
575318	20x8.00-10	4	19.4	7.6	6.50	895	24	7.7
50D362	20x10.00-10	4	19.6	9.3	8.00	1160	22	10.1
575315	20x12.00-10	4	19.6	11.7	8.00	1320	20	13.9
S753N1	22x9.50-10	4	21.7	9.5	7.00	980	14	14.3
5753P2	24x9.50-10	4	24.3	9.8	7.00	1410	22	16.1
5753A6	24x12.00-10	4	24.5	11.5	7.75	1740	20	20.7
575301	23x8.50-12	4	22.3	8.4	7.00	1115	22	10.1
575367	23x10.50-12	4	22.4	10.1	8.50	1340	20	13.0
575390	24x12.00-12	6	23.5	11.0	8.50	2240	32	21.3
50D363	26x12.00-12	10	25.3	12.4	8.50	3100	52	24.4



Turf Trac

TURF SAVER II

Part #	Size	Ply	MTD Dia.	MTD Width	Rim Width	Max Load Capacity 10 MPH	Tire MAX PSI	Weight
5112201	13x5.00-6	2	12.3	4.6	3.50	295	20	3.8
5112301	15x6.00-6	2	14.3	6.0	4.50	365	14	5.3
5112951	16x6.50-8	2	16.0	6.2	5.38	415	14	5.9
5112701	18x8.50-8	2	17.5	8.2	7.00	515	10	6.3
511284	18x9.50-8	2	17.8	9.1	7.00	695	12	6.5
511280	20x8.00-8	2	19.0	8.9	7.00	600	10	7.7



Turf Saver II

TURF MATE

Part #	Size	Ply	MTD Dia.	MTD Width	Rim Width	Max Load Capacity 10 MPH	Tire MAX PSI	Weight
5113301	15x6.00-6	2	14.3	6.1	4.50	365	14	5.2
5113951	16x6.50-8	2	16.3	6.2	5.38	415	14	5.3
511396	16x6.50-8	4	16.0	6.6	5.38	620	28	5.9
511371	18x8.50-8	4	17.7	8.6	7.00	815	22	7.2
5113841	18x9.50-8	2	18.1	8.9	7.00	695	12	10.3
511300	20x8.00-8	2	19.1	8.8	7.00	600	10	7.7
511303	20x10.00-8	4	19.2	9.5	7.00	1130	20	9.8
511421	23x10.50-12	4	22.6	10.3	8.50	1340	20	12.4



Turf Mate

STUD

Part #	Size	Ply	MTD Dia.	MTD Width	Rim Width	Max Load Capacity 10 MPH	Tire MAX PSI	Weight
5160251	4.10-4	2	10.6	3.6	2.5	230	24	2.6
5160301	4.10-5	2	11.6	3.8	3	260	24	2.4
5160351	4.10-6	2	12.5	3.9	3.25	290	24	3.2
5160501	4.80-8	2	16.4	4.7	3.75	435	20	4.8
5164291	4.80-8	4	16.3	5.4	3.75	670	42	5.8



Stud

Wheels not included

Tires & Tubes



SAWTOOTH

Part #	Size	Ply	MTD Dia.	MTD Width	Rim Width	Max Load Capacity 10 MPH	Tire MAX PSI	Weight
5190011	2.80-4	4	9	2.9	2.5	180	50	1.7
5190251	4.10-4	2	10.6	3.6	2.5	230	24	2.5
5190261	4.10-4	4	10.5	3.8	2.5	350	50	2.2
519016	3.40/3.00-5	4	11	3.9	3	380	95	2.5
5190301	4.10-5	2	11.6	3.8	3	260	24	2.6
5190351	4.10-6	2	12.6	3.9	3.25	290	24	3.2
5190361	4.10/3.50-6	4	13.0	4.2	3.25	495	85	3.3
519067	5.30/4.50-6	6	14.6	5.3	3.50	885	95	5.1
5190501	4.80/4.00-8	2	16.0	4.6	3.75	510	35	5.1



Sawtooth

SLICK

Part #	Size	Ply	MTD Dia.	MTD Width	Rim Width	Max Load Capacity 10 MPH	Tire MAX PSI	Weight
5100171	4.10/3.50-4	4	10.5	3.8	2.50	350	50	3.1
5100231	4.10/3.50-5	4	11.5	4.0	3.00	400	50	3.4
5100471	11x3.60-5	4	11.0	3.6	3.00	305	60	3.9
5100411	11x6.00-5	4	10.5	6.0	5.25	n/a	45	4.6
5100221	12x4.00-5	4	11.9	4.0	3.00	395	50	5.1



Slick

SMOOTH

Part #	Size	Ply	MTD Dia.	MTD Width	Rim Width	Max Load Capacity 10 MPH	Tire MAX PSI	Weight
5120081	8x3.00-4	4	8.2	2.9	2.50	120	30	1.7
5120101	9x3.50-4	4	8.7	3.7	2.5	260	50	2.3
5120111	11x4.00-5	4	11	4	3	325	46	3.2
5120211	13x5.00-6	4	12.7	4.8	4.5	440	40	4.1
5121861	13x6.50-6	4	13	5.9	4.5	460	28	4
5120511	4.80-8	4	16.8	4.8	3.75	760	70	4.1
510981	18x9.50-8**	4	17.7	9.3	7.00	1040	24	9.3
599358	18x9.50-8	4	17.8	8.7	7.00	1040	24	8.3
586310	18x10.50-10	2	18.1	10.0	8.50	730	12	11.2
586325	20x10.00-10	2	19.6	9.5	8.00	815	12	11.9



Smooth

** Rounded shoulder

WHEEL BARROW

Part #	Size	Ply	MTD Dia.	MTD Width	Rim Width	Max Load Capacity 10 MPH	Tire MAX PSI	Weight
5134371	4.00-6	2	13.6	3.9	2.50	330	30	2.0
5134511	4.80-8	2	15.8	3.9	2.50	550	30	2.5
5130511	4.80x8	4	16.3	4.5	3.75	765	70	3.4



Wheel Barrow

MULTI RIB

Part #	Size	Ply	MTD Dia.	MTD Width	Rim Width	Max Load Capacity 10 MPH	Tire MAX PSI	Weight
576305	13x6.50-6	4	12.7	6.2	5.00	460	28	4.0
576362	20x10.00-10	4	19.6	9.3	8.00	1160	22	11.5

Wheels not included

STRAIGHT RIB

Part #	Size	Ply	MTD Dia.	MTD Width	Rim Width	Max Load Capacity 10 MPH	Tire MAX PSI	Weight
5110921	11x4.00-4	4	10.4	4.1	2.50	350	50	3.2
5180101	11x4.00-5	2	10.9	4.2	3	210	22	2.6
5180201	13x5.00-6	2	12.7	4.6	3.5	295	20	3.9
5180211	13x5.00-6	4	12.9	4.7	3.50	440	40	4.1
5181861	13x6.50-6	4	13	5.9	4.5	460	28	4
5180301	15x6.00-6	2	14.2	6.1	4.5	365	14	5.4
5180311	15x6.00-6	4	14.5	6.1	4.5	570	30	3.9
5180511	4.80-8	4	16.5	4.7	3.75	765	70	4.0
5180951	16x6.50-8	2	15.9	6.4	5.38	415	14	4.2
5180961	16x6.50-8	4	16.0	6.4	5.38	620	28	5.2
5189801	18x8.50-8	4	17.6	8.7	7.00	815	22	10.4
518081	18x9.50-8	4	17.7	9.3	7.00	1040	24	9.4
518116	20x10.00-10	4	20.0	8.7	6.00	1160	22	12.8
518711	26x12.00-12	4	25.0	11.7	10.50	1780	20	22.3



Straight Rib

LINKS

Part #	Size	Ply	MTD Dia.	MTD Width	Rim Width	Max Load Capacity 10 MPH	Tire MAX PSI	Weight
5192711	18x8.5-8	4	17.4	8.5	7	815	22	13.2



Links

SUPER LUG

Part #	Size	Ply	MTD Dia.	MTD Width	Rim Width	Max Load Capacity 10 MPH	Tire MAX PSI	Weight
510101	20x10.00-8	4	20.1	9.7	7	1190	22	17.3



Super Lug

TURF TAMER (Replacement tire for John Deere Gator)

Part #	Size	Ply	MTD Dia.	MTD Width	Rim Width	Max Load Capacity 10 MPH	Tire MAX PSI	Weight
55U373	AT25x12-9	3	25.3	11.2	9.5	495	7	17.5
55U3C7	22.5x10-8	4	22.8	9.2	8.0	1390	22	14.2



Turf Tamer

HD FIELD TRAX

Part #	Size	Ply	MTD Dia.	MTD Width	Rim Width	Max Load Capacity 10 MPH	Tire MAX PSI	Weight
5883B9	AT22.5x10.00-8	3	22.5	10.2	7.00	365	7	20.5
588394	AT25x1300-9	3	24.8	12.4	10.50	535	7	27.1



HD Field Trax

Wheels not included

TRAC CHIEF (Construction)

Part #	Size	Ply	MTD Dia.	MTD Width	Rim Width	Max Load Capacity 10 MPH	Tire MAX PSI	Weight	Tread Depth
51S3C2	5.70-12 (TL)	4	22.4	5.7	4.50	1450	60	15.5	17
51S311	18x8.50-10 (TL)	4	18.2	8.0	7.00	830	22	13.9	16
51S3C3	23x8.50-12 (TL)	4	23.0	8.0	7.00	1470	35	21.2	14
51S3G8	23x8.50-12 (TL)	6	22.6	8.4	7.00	1820	50	32.6	14
51S388	23x8.50-14 (TL)	4	23.0	8.0	7.00	1560	35	23.2	17
51S379	25x8.50-14 (TL)	6	25.8	8.4	7.00	2130	50	26.7	17
51S361	26x12.00-12 (TL)	4	25.5	12.4	10.50	1780	20	33.5	19
51S339	27x8.50-15 (TL)	6	26.7	9.0	7.00	2400	50	28.4	17
51S3H7	27x10.50-15 (TL)	6	26.8	10.4	8.50	2610	45	33.7	17
560410	29x10.50-15 (TL)	8	29.0	10.5	8.50	4840	70	44.1	19
51S3C8	10-16.5 (TL)	6	30.8	10.4	8.25	3500	45	43.0	19
51S3D1	10.00x16.5 (TL)	8	30.8	10.4	8.25	4140	60	44.0	19
51S3D2	12-16.5 (TL)	8	33.3	12.2	9.75	4810	50	58.0	23
51S3J7	12-16.5 (TL)	10	33.3	12.2	9.75	5600	65	65.0	23
510027	14-17.5 (TL)	6	35.7	13.7	10.50	3805	30	86.4	25
510039	14-17.5 (TL)	14	36.7	14.1	10.50	8540	80	109.8	25
511729	15-19.5 (TL)	6	40.0	15.6	12.25	4800	30	110.8	26
510024	15-19.5 (TL)	12	39.3	16.2	12.25	9190	60	144.5	26



Trac Chief

USA LOADER

Part #	Size	Ply	MTD Dia.	MTD Width	Rim Width	Max Load Capacity 10 MPH	Tire MAX PSI	Weight	Tread Depth
510723	23x8.50-12 (TL)	6	23.4	8.6	7.00	1810	50	23.9	12
510721	27x8.50-15 (TL)	6	27.3	9.1	7.00	1650	50	33.7	16
510722	27x10.50-15 (TL)	6	27.2	10.2	8.50	1520	40	38.9	16
510712	10-16.5 (TL)	8	31.0	10.7	8.25	4140	60	57.0	26
510713	10-16.5 (TL)	10	30.9	10.6	8.25	4720	75	58.0	26
510715	12-16.5 (TL)	8	33.5	12.8	9.75	4810	50	72.8	27
510716	12-16.5 (TL)	10	33.3	13.0	9.75	5600	65	73.4	27
510717	14-17.5 (TL)	14	36.1	14.2	10.50	8540	80	109.8	2



USA Loader

Wheels not included

REPLACEMENT TUBES

Part #	Size	Valve Stem
TU93505	9x350-4	90°
TU114005	11x400-5	90°
TU135006	13x500-6	90° (Special J)
TU135006S	13x500-6	Straight
TU136506	13x650-6	Straight
TU156006	15x600-6	Straight
TU166508	16x650-8	Straight
TU186508	18x650-8	Straight
TU188508	18x850-8	Straight
TU2080010	20x800-10	Straight
TU2010008	20x1000-8	Straight
TU20100010	20x1000-10	Straight
TU2111008	21x1100-8	Straight
TU2210008	22x1000-8	Straight
TU2212008	22x1200-8	Straight
TU2385012	23x850-12	Straight
TU23105012	23x1050-12	Straight
TU24120012	24x1200-12	Straight
TU2512009	25x1200-9	Straight
TU26105012	26x1050-12	Straight
TU2802504	280/250-4	90°
TU2802504-S	280/250-4	90° (Special J)
TU4005	400-5	90°
TU4008	400-8 Low Speed	Straight
TU4009	400-9	Straight
TU4103504	410/350-4	90°
TU4103504S	410/350-4	Straight
TU4103505	410/350-5	90°
TU4103505S	410/350-5	Straight
TU4103506	410/350-6	90°
TU4804008	480/400-8	Straight
TU48040012	480/400-12	Straight
TU53012	530-12	Straight
TU5705008	570/500-8	Straight
TU8007	800-7	90°



JACKSON SHOVELS **NEW!**

Part # 48912X12S

- 48" wood handle shovel - Standard commercial
- 9-1/2" x 12" round point shovel
- Forward turned step



Part # 4810X12

- 48" wood handle shovel - Standard commercial
- 10" x 12" square point shovel
- Forward turned step



Part # 48912X12M

- 48" wood handle shovel - Midgrade commercial
- 9-1/2" x 12" round point shovel
- Forward turned step
- 14 gauge



Part # 30912X12

- Midgrade commercial 30" wood handle shovel with D-Grip
- 9-1/2" x 12" round point shovel
- 14 gauge



Part # 4810X12Q

- 48" wood handle shovel - Midgrade commercial
- 10" x 12" square point shovel
- Forward turned step
- 14 gauge
- Double rivet



Part # 3010X12

- 30" wood handle shovel with D-Grip - Midgrade commercial
- 10" x 12" square point shovel
- Forward turned step
- 14 gauge
- Double rivet



Part # 48834X1134

- 48" wood handle shovel - Premium commercial
- 8-3/4" x 11-3/4" round point shovel
- Titanium added for increased strength and durability
- Diamond plate socket
- 14 gauge
- Double rivet



Part # 48934X1112

- 48" wood handle shovel - Premium commercial
- 9-3/4" x 11-1/2" square point shovel
- Titanium added for increased strength and durability
- Diamond plate socket
- 14 gauge



Part # 30512X14

- 30" wood handle shovel with D-Grip - Premium commercial
- 5-1/2" x 14" serrated round point shovel
- Titanium added for increased strength and durability
- Diamond plate socket
- 14 gauge

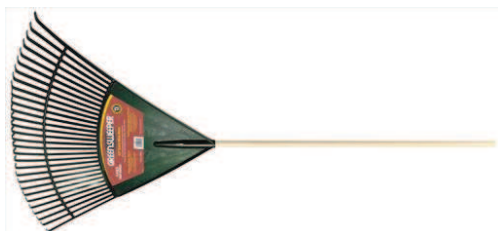


AMES TRUE TEMPER RAKES NEW!

GREENSKEEPER POLY RAKE

- Uniform, fortified premium polypropylene tines
- Ribbed construction for rigidity and strength
- Wood handle

Part #	Width	Handle Length
Poly24	24"	48"
Poly30	30"	48"
Poly 36	36"	54"



SUPER FLEX LAWN RAKES

Part # FLEX22

- 22" tines
- 48" handles
- Combination poly head
- Flexible one-piece steel tines
- Replaceable tines
- Flexible coil spring



Part # FLEX8

- 11" tines
- 48" vinyl coated aluminum handle
- Great around shrubs



ALL STEEL TINE RAKE

Part # STEEL18

- 18"
- 48" vinyl coated aluminum handle
- Great for working about shrubs



ALUMINUM LANDSCAPE RAKES

Part # LAND30

- 30"
- Brace handle
- Round teeth



Part # LAND36

- 36"
- Brace handle
- Round teeth



MULCH FORKS

Part # MULCH12

- (10) 12" tines/48" handle
- 10-3/4" width manure bedding fork
- Tempered, welded
- Seal-coated norther ash handle
- Chrome plated steel ferrule for strength



Part # MULCH16

- (10) 16" tines/30" D-Grip Handle
- Fully tempered, welded construction
- Durable sharp pointed oval tines; painted ferrule

FORGED BOW RAKE

Part # BOW16

- 16 tines
- 60" wood handle



THE GROUNDSKEEPER™ BAGS

- Carry trash and debris
- Use to hold drinks and personal supplies
- Durable, weather resistant

Part # ARB01

- ZTR Arm Rest Bag
- 10" X 12" L



Part # EB01

- Walk-Behind bag with buckles
- 16" x 14"
- Black



Part # EB02

- Walk-Behind bag with Velcro
- 16" x 14"
- Black



Part # ZTR1

- ZTR bag
- Attaches behind seat
- 16" W x 12" L



LOADLITE RAMPS

Part # AC308

- MaxArc LoadLite Ramp
- For mowers and low clearance equipment
- Quick straps double as tie-downs and stabilizers
- Arch designed into top half of ramp
- 12" x 89"
- Capacity: 1500 lbs.
- 4" rung spacing
- Weight: 26 lbs.



Part # AC307

- Trifold LoadLite Ramp
- Features recessed rungs
- Trifold design stores between ATV tires
- Stabilizer straps double as tie downs
- 42" - 52" x 76"
- Capacity: 1250 lbs.
- 5" rung spacing
- Weight: 25 lbs.



Part # AC315

- Folding Arch Ramp
- Folds in half for easy storage
- Stabilizer straps double as tie-downs
- 12" x 89"
- Capacity: 1500 lbs.
- 4" rung spacing



Part # AC316

- Zero Turn Loading Ramp
- Wider loading capacity than standard ramps
- Loads/unloads zero-turns safely
- Triple structure for extra strength
- 20-1/2" x 64"
- Capacity: 3600 lbs.
- Weight: 36 lbs.



LANDSCAPE TRAILER and TRUCK PARTS and ACCESSORIES

Heavy Duty 1/4" Scuff-Guard Helix Hoses

Part #	Hose Diameter	Section Length
VH4 NEW!	4"	5'
VH6 NEW!	6"	5'
VH7 NEW!	7"	5'
VH8 NEW!	8"	5'
VH10 NEW!	10"	12-1/2"



Hose Clamps

Part #	Size
HC4 NEW!	4"
HC6 NEW!	6"
HC7 NEW!	7"
HC8 NEW!	8"
HC10 NEW!	10"
HC12 NEW!	12"
HC16 NEW!	16"



Heavy Duty Hose Handles

- Ideal for controlling mulch or top-soil product
- Makes handling hose a snap

Part #	Size
HH4 NEW!	4"
HH8 NEW!	8"
HH6 NEW!	6"
HA6 NEW!	8"
HA10 NEW!	10"
HA12 NEW!	12"

SULKIES

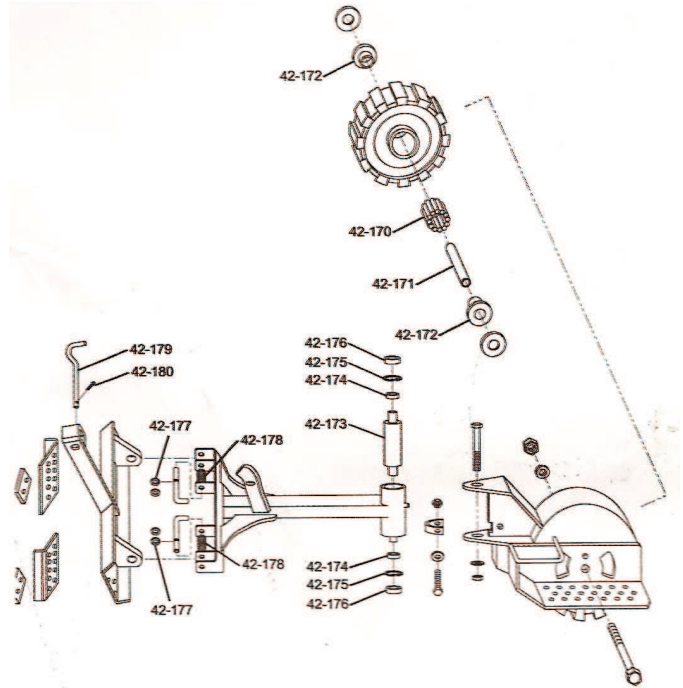
Part # MS27

- Two Wheel
- Protected grease fittings
- Design keeps rider centered behind mower
- 18" arm



Part # MS28

- One Wheel
- Large pneumatic tire
- Easily attaches to most mid-size commercial mowers in minutes
- 18" arm



SULKY PARTS - MS28

Part #	Description
P42170	Roller Bearing
P42171	Axle Bushing
P42172	Bearing Cap
P42173	Axle Bushing
P42174	Bearing
P42175	Clip (10 pack)
P42176	Pivot End Caps
P42177	Clip (10 pack)
P42178	Spring (10 pack)
P42179	Hanging Lever
P42180	Split Pin (10 pack)
P42181	Bronze High Bushing

Part #	Description
P42182	Hair Pin Cotter (10 pack)
P42183	Wheel Bearing Kit
P42184	Bearing Kit
P42185	Hitch Pin Assembly
P42186	Seal
P42187	Bronze Pivot Bushing
P42188	Wheel Bearing w/Cap
P42192	Bushing Sleeve
P42194	Wheel Assembly
P42195	Caster Cap
P42201	Spring Pin

TRIMMER STANDS/HOLDERS

Part # AC003

- Designed for ease and portability
- Folds flat for easy storage
- Uses an adjustable linkage clamp
- Tapered rotational locking system
- 2 height adjustment positions
- Durable, blue power coat finish



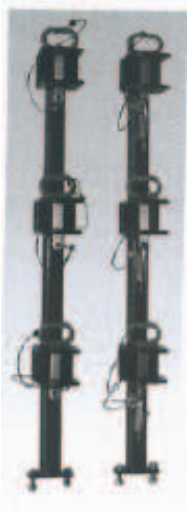
Part # AC007

- Easily mounted on any work bench
- Uses an adjustable linkage clamp
- Mounting flange has 4 holes allowing use of bolts or lag bolt (not included)
- Durable, blue powder coat finish



Part # TG3000

- Securely hold line, trimmers, brush cutters, edgers, shaft hedge clippers or pole saws
- Three adjustable slots hold equipment securely
- Two-inch wide slots accommodate wide shaft poles
- Powder coated metal frame prevents rusting
- Flat pin design helps stop fuel spills
- Individual locking pins
- Mounting hardware included
- Racks for open trailer mounting



Part # TG3500

- Securely hold line, trimmers, brush cutters, edgers, shaft hedge clippers or pole saws
- Three adjustable slots hold equipment securely
- Two-inch wide slots accommodate wide shaft poles
- Powder coated metal frame prevents rusting
- Flat pin design helps stop fuel spills
- Individual locking pins
- Mounting hardware included
- Racks for closed trailer mounting



BACKPAK BLOWER RACK/HOLDER

Part # P42032

- Securely holds and locks most commercial backpack blowers using a flat pin design
- Heavy duty black vinyl coating
- Comes with hardware and one lock
- Internal wall mount or external trailer mount



WATER COOLER HOLDER

Part # P42078

- Powder-coated steel holder
- Holds any size water cooler
- Includes bungee strap



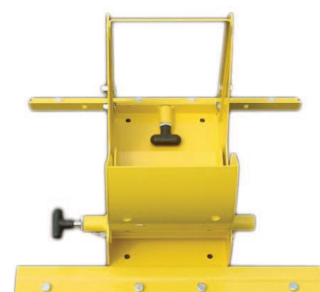
Part # P42190

- Replacement strap for our part # P42078

PRO LOCKER WHEEL LOCKS

Part # P42045

- For landscaping wheeled equipment
- Secures to trailer to prevent theft and damage
- Easily installs in under 20 minutes
- Heavy duty steel construction with durable powder coat finish
- Fits 7" - 11" tires up to 5/8" wide
- Accommodates most large area walkbehinds



TIRE REPAIR TOOLS & ACCESSORIES

Part # AC53

- Safety Tire Seal
- Patented insertion tool
- Self-vulcanizing
- Spare insertion needle
- Set screw
- Allen wrench
- 60 plugs per box



Part # AC54

- Tire Plugs
- Additional inserts for AC53



TIRE REPAIR TOOLS & ACCESSORIES *continued*

Part # P67110

- Valve stem fishing tool
- Aligns/holds valve in position with valve hole while mounting tire
- Fits all size holes



Part # P67111

- 4-way valve stem repair tool
- Valve core screwdriver
- Rethread valves
- Valve core easy out
- Deflates tubes



Part # 6599

- Tire gauge/Accugauge
- Flexible braided hose
- Bleed valve for precise air pressure
- Unbreakable crystal and rubber boot
- Brass geared movement



TIRE CHANGER

Part # TC412

- All steel construction
- Heavy duty use
- No air or electric hookup required
- Works on more size and types of wheels than any other model
- For all tires using 4" -12" dia. rims
- Complete with:
 - floor mount base
 - hub holder
 - bead buster
 - demount/remount tool
 - lubricant
- Made in the USA



BRADLEY MOWER JACK

Part # P42083

- Easily lifts mower deck 20"
- Work on most walk-behind and commercial riders
- Heavy duty steel construction
- Durable powder coat finish
- 2 pneumatic 410x3.50-4 tires and wheels



DRAW BAR PIN WITH LINCH PIN

Part # B1AC141

- Length: 3-1/2"
 - Shank diameter: 1/2"
- NEW!**



E-Z REACH

- Stainless steel side and center straps
- Synthetic rubber cups

Part #	Description
CO311	32" length
CO312	42" length
CO313	Pack of 2 replacement cups



JB WELD

Part # 9077

- Repairs, fills, bonds
- Use on iron, steel, copper, aluminum, brass, bronze, pewter, wood, porcelain, ceramic, plastic



OIL DRAIN VALVE

Part #AC52

- Mounts permanently to engine
- Connect any 1/2" hose when draining oil
- 3/8"-18 NPTF thread



OIL EXTRACTOR

Part #AC7815

- Makes oil changes quick and easy
- Use to extract engine oil, brake fluid, antifreeze and more
- 1.7 gallon/6.5 liter capacity
- Pressure relief valve button
- Automatic shutoff valve prevents accidental overflow.



OIL FILTER WRENCH

Part # OF

- Oil Filter Wrench
 - Fits 2-1/2" to 4-1/2" diameter filters
 - Slip joint handle fit lets you fit into tight spaces
 - 25° jaw angle
 - Non-slip grip
- NEW!**



OIL FILTER PLIERS

Part # OF

- Oil Filter Pliers
- 2-1/4" to 3-1/2" dia. filters
- 3 position comfort grip
- Right angle teeth grip in all directions

NEW!



Part # OF

- Oil Filter Pliers
- 3-1/4" to 4-1/2" dia. filters
- 3 position comfort grip
- Right angle teeth grip in all directions

NEW!



KRYLON INVERTED MARKING PAINT

- 20 oz. can
- Water-based
- Ideal for utility location
- One pass valve for bold visible marking
- Glove grip cap - 50% wider opening
- Spray-thru cap - non-clogging spray tip
- Locking tip - won't fall off with extended use
- Fast-drying formula penetrates and adheres to hot, cold or wet surfaces
- VOC and MIR compliant and free of lead hazards

Part #	Color
S030801	APWA Utility Yellow
S03901	APWA Brilliant White
S039309	APWA Blue
S03610	Fluorescent Safety Red
S03612	Fluorescent Pink
S03620	Fluorescent Caution Blue
S03630	Fluorescent Safety Green
S03650	Flourescent Red/Orange



KRYLON HAND HELD WHEELER WAND

Part # K07096

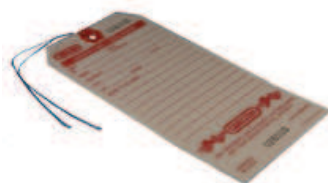
- Improves efficiency
- Durable construction of rugged plastic and lightweight steel
- Comfortable pistol grip for easy handling and marking
- 34" height



SERVICE TAGS

Part # AC1000

- Reinforced eyelets
- 3-3/4" x 6-1/4"
- Sold in packs of 500



FLAGS & TAPE

Stake Flags

Part #	Color
SM64100	Glo-Orange
SM64101	Glo-Pink
SM64105	Glo-Lime



Flagging Tape

Part #	Size	Color
SM65901	300'	Red
SM65902	300'	Orange
SM65903	300'	Blue
SM65904	300'	White
SM65905	300'	Yellow



Barrier Tape

Part #	Size	Description
SM66200	300' x 3"	Caution
SM66231	1000 x 3"	Caution



PLASTIC TRASH BAGS

Part #	Size	Description	Quantity
P06100	33 gallon	1 mm thick, medium duty	250/box
P06101	33 gallon	1 mm thick, medium duty	50/bag
P06102	42 gallon	3 mil contractor, heavy duty	50/box



NYLON CABLE TIES

Part #	Description	Pack Size
8545	14" nylon cable ties	100
9086	7" nylon cable ties	100



PARTS BOXES

Part #	Description
AC107	4" W x 12" L
AC108	6" W x 12" L
AC106	2" W x 12" L



TRIMMER HEADS

Two-line Manual Trimmer Head

Part #	Description
WE300	Trimmer Head Assembly L.H.

Two-line Semi-matic "Tap n Go" Trimmer Head

Part #	Description
WE500	Trimmer head assembly L.H. (Maximum line gauge .095)

Commercial "Tap n Go" Trimmer Head

Part #	Description
WE200	Trimmer head assembly L.H. Holds more line. Easy to assemble.

TRIMMER HEAD PARTS

Part #	Description
WE307	Eyelets for WE300/WE500
WE207	Bump Knob for WE200
WE338	Arbor bolt for Husky models using counter bore 10 mm x 1.25 Female, L.H.

Trimmer head packaging comes complete with "A", "D" and "U" bolts to adapt heads to any of the trimmer models listed in the "Trimmer Head Application Chart" included in this section.



TRIMMER HEAD APPLICATION CHART

A Bolt - Silver Adaptor

ALPINA: 21, 25, 30, 34, 34D, 34F, 42, 42D, 42F, 52, 52D, 52F, 160, 180, 200
ARIENS: BC350, BC400, TB220E, TB260
ARIMITSU: ACC15, ACC17, ACD17, ACD18, ACE30, ACZEK, AM16D, AM24D, AM31, AM31K, AM4Z, AM50
ASTRON: 256E, KFS4 Series, FKS12, FS22, KFS24, P750, PK2400E, PK3300E, S250 ('83)
BRUSH KING: BK32, BK32LT, BK49, BK85, BK100
GREEN MACHINE: 525H, 1200, 1500, 1600, 1700, 1900, 1930, 1940, 1950, 2000, 2100, 2130, 2200, 2331, 2340, 2345, 2500, 2500LP, 2510LP, 2540, 2540LP, 2600, 2800, 2810, 2840, 2841, 2850, 3000, 3000B, 3000J, 3000M, 3000SS, 3040M, 3050M, 3541, 3510, 3540, 3541, G2A, G2C, GT21, GT22, GT25, GT31, GT31B, GT35B, GT40B, GT41, SRM3000, SRM3000LP, SRM3000M, SRM3000S, SRM3040M
HOMELITE: HK24 (To 1/1/86), HK30 (After 1/1/86), HK33 (To 1/1/86)
HUSQVARNA: 16R (Up to '86), 22R (Up to '86) 24R (After Ser # 603702), 25R (Up to '86), 25RL (After '86)
JONSERED: BP40, BP40 COMBI, BP2040, BR400, BR420, BR450, BR460, BR480, GT21L, GT22L, GT24L, GR26, GR26L, COMBI, GR32L, GR32L CAT, GR2026CL, GR2026D, GR2032, GR2023D, GR2032L, GR2036, LR200, LR220, LR220B, LR220L, LR260, LR260B, LR260L, LR300, LR320, LR400, LR420, LR450, LR460, TIGER 40
MAKITA: EM4251, RB251, RBC221, RBC230, RBC251, RBC252, RBC255, RBC260, RBC261, RBC281, RBC310, RBC311, RBC321, RST250
MARUYAMA: BC184, BC184C, BC200, BC201, BC241, BC260, BC260H, BC260CB, BC320, BC320H, BC326, BC340DL, BC402, BC420H, BC500H, BC2300, BC2320, BC2600, BC2620, BC3020, BC3200, BC4200H, BCGX22, BC2320, BC2620, BLC2250, BCL2250C, BCL2550, BST23, MC8, MC-S
OLYMPIK: 433BP, 727S, 727T, 733S, 740S, 740T, B200, B220, B220L, B220S, B260, B300, B400, B420, B450, B460, OL8260BAV, OL8260DAV, OL8260LAV, OL8260TA, OL8350BAV, OL8350LAV, OL84058P, OL8460BAV, OL8725LAV, OL8726TA, OL8735BAV, OL8735LAV, OL8740BAV, OL8742BAV, OL8746BAV, OL8750PRO, OL8753BAV, OL88510BAV, PRO38
PIONEER/PARTNER: SPARTAN B180, B25, B250
REDMAX: BC260DL, BC261DL, BC262DL, BC340DL, BC341DL, BC342DL, BC2200E, BC2200LDC, BC2600DL, BC2601S, BC3400DL, BC4400DL, BCX2600S, BCZ2500S, BT2200LDC, G2KC, SGC2300DL, SGXC2600S
SHINDAIWA: BP35, BP45, C25, C27, C250, F20, R20, R25, R35, T25, T250, T260, T261, T27, T270, T350, YARDWARE 220
STIHL: FS50, FS50E, FS50F, FS551, FS51AVE, FS55, FS55R, FS60, FS61, FS61AE, FS65, FS65AVE, FS65AVRE, FS80E, FS80RE, FS8, FS90, FS90AVE, FS91, FS96
TANAKA: AST210, AST7000, SUM301, SUM321, TBC Series, 162, 205, 215, 218, 220E, 220SS, 232, 233, 240, 250, 262, 265, 270PF, 300, 301, 321, 322, 325, 355, 373, 400, 420PF, 422, 422C, 425, 500, 501, 2100, 2110, 2111, 2510, 2800, 3010, 4500, 4501, TST218, TST501
TAS: HD180, PARLANDER

TRIMMER HEAD APPLICATION CHART

A Bolt - Silver Adaptor

TMC: 1800, 2400, 3300, 3350

TML: 2856

VADERMOLEN: L3335G

WESTMAC: 16, 23, 31

WINDMILL: AM Series

XENOA: BC15, FBC12, FDC26

YAZOO: TBC31, YBC16, YBC23, YBC31

D Bolt - Installed

ASTRON: S250 ('88)

DOLMAR: BC210, BC212

ECHO: SRM Series, 140, 140A, A140D, 200, 200A, 200AE, 200BE, 200CE, 200D, 200DA, 200DB, 200DE, 202DA

HOFFCO: 202FA, 210, 210AE, 210E, 210I, 210SB, 210U, 230, 230S, 230U, 250, 250E, 260, 260S, 260U, 300, 300AE, 300AE1, 300AE/1, 300E, 300E/1, 302, 302ADX, 303E, 311, 311S

HONDA: 311U, 340, 400AE, 400B, 400BE, 400E, 400U, 1500, 1500A, 1501, 2100, 2100SB, 2101, 2110, 2200, 2201, 2300, 2301, 2400, 2400SB, 2410, 2500, 2501, 2501S, 2502, 2510, 2601, 3000, 3001, 3010, 3100, 3100S, 3400, 3410, 3800, 4600, JP Series, 215, 215GT, 220F, 225, 260, 260A, 260C, 270, 300, 300A, 300B, 300C, 300F, 320, 390A, 390C, 390XL, 420, 420D, 660 HHT25SLTA, HHT31SLTA, HHT31UNBA, UMK422LNA, UMK422LTA, UMK431LNA, UMK431UNBZ

IDC: 540, 540-1, 540-2, 540 SUPREME, 580, 580-1, 580-2, 580 SUPREME

JOHN DEERE: 24S, 25S, 30S, 38B, 38R, 38S, 60G, 90, 240G, 250G, 260G, 300G, 305, 350G, 360G, 380G, 385, 450G, 460G

JONSERED: GR41, GR44, RS44

KAZZ: BS400, BX440, BX450, G3CR, G4CR, J40FD, J400G, J400GX, J480, J48D, JQ40, JQ50, K10, K40D, KQ30, KQ30B, KT10, KT30R, RQ30, RA30B, T240, T30, T50, U10, V15, V18, V25, V35, V40, VRP201, VRP301, VRP400, VRS201, VRS301, VRS400, VRX360, VRX440, VRX540, VS300, VS400, VS441, VX360, VX430, VX440, VX450

LAWNBOY: 1460, 1480, 1480CC, 61653, 61953

McCULLOCH: EB Series: III, IIISX, IV, IVSL, 32BC, 35L, 280, 282, 2285BCS, 287BCS, 297BCS, 325BC, 327BC, 2815, 2816, 2817, 2818, 2845, 3225, 3225HD, 3227, 3227HD, MAC Series, 90, 90A, 95, 95A, 99A, 99SL, 100A, 100AHD, 100HD, PRO MAC Series III, IIISUP, IVSUP, 2335J, 2635B, 2645J, 3335L, 4335B, PROSCAPER Series IS, II, IIHD, III, IV, V, PSI, PS2, PS31, PS4, PS5, 28S, 32HD, 32HDS, SEBIV, SILVER

MTD PRO: ST23, ST26, ST35

PIONEER/PARTNER: S33, S41, S51, SCC

REDMAX: BC200, BC250, BC2000DL, BC2300DL, BC3401DL, BC440ADW, BCX2600S, BCZ2400S, BCZ2500SU, BCZ2500SW, BCZ600S, BCZ3000S, BCZ3000SE, EXZ2500-BC, SGCZ2500S, SGCZ2600S, BT2000, BT20001DL

RYOBI: 740R, 740R-1, 750R, 775R, 780 series, 780R, 780R-1, 780RB, 780RE, 790R, 840R, 865R, 885R, 990R, 1079R, 2079R

SERVISTAR: 385SSR, 395SSR

SHINDAIWA: T270, T272X, T2510, T3410X

SNAPPER: 210S, 2101SST, 211SS, 211ST, 2150RI, 215SST, 240SS, 240SST, 245ORT, 245SST, 310, 311, 311S, 410, 410SST, 411SST, 4510ORT, SST211, SSTBC, SST2401, SST4111, 410SST, P212LST

SOLO: 014, 100, 130S, 400, S100, S400

TAS: QUM2, SUM3

TORO: 1000, 2000, 30900, 30901, 30920, 51628, 51641, 51645, 51650, 51660, CL700, CL2100, CL30900, CL30901, CL30920, TC300, TC350, TC400, TC600, TC650, TC700, TC800, TC2100, TC3000, TC3100, TC3500, TC4000, TC5000

TURF POWER: 740TP, 780TP

VANDERMOLEN: L184F/G, L335G, L2035G, L/X1845E/G, L/X2415E/G, X335E/G

U Bolt - Gold Adaptor

ASTRON: S150 ('86 models), S250 ('84, '86 Models)

HUSQVARNA: 24R (Up to Ser. # 603702)

KAZZ: V20

MARUYAMA: BC220DL, BC221DL

REDMAX: BC220DL, BC221DL, BC2400DL, BC300DL

SHINDAIWA: C20, C230, LT18, LT20, T18, T20, T20A, T22, T35, T230, T230XR, T231

TONDU: S100, S250

XENOA: BCD

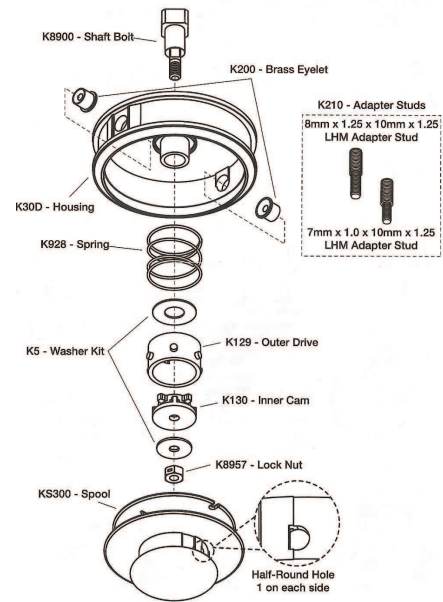
KWIK LOADER TRIMMER HEADS

Part #	Size	Application
KL650	4.75" dual line head	Heavy duty cutting head Fits 21cc and up
KL450A	4.5" head	Fits 21cc and up Most Ryobi, Homelite, Servistar, Stihl FX45/46, Toro, IDC/Ryan, McCulloch and Lawnboy trimmers with hex drive extended lower shafts
KL730	5.75" tri-pro three line head	Heavy duty cutting head Fits 25cc and up
KL650F	4.75" dual line	Heavy duty cutting head Fits 21cc and up Perfect for serrated line
KL35	Adapter	For Stihl FE/FS curved shaft trimmers



KT KWIK TAP SERIES TRIMMER HEADS

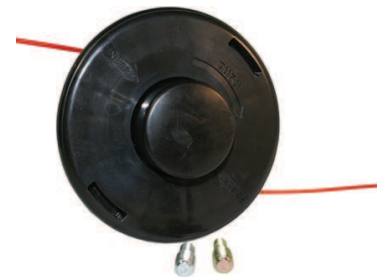
KT30



KT50



KT40



KWIK LOADER APPLICATION GUIDE

MANUFACTURE /MODEL #	REF#	DESCRIPTION	COLOR KWIK LOADER	KL450A	GS750	KL650	KL650F	KL730	STUD KT SERIES	KT30	KT30H	KT30S	KT40	KT40H	KT40S	KT50	KT50H	KT50S
ALPINA																		
170,180,200	KL53	8mm x 1.25 x 22 LH - BOLT	PURPLE		X	X	X	X	SILVER	X			X			X		
21,25,30,34,34D,34F,42,42D	KL70	8mm x 1.25 LH - NUT	BLUE		X	X	X	X										
42F,52,52D,52F,160	KL70	8mm x 1.25 LH - NUT	BLUE		X	X	X	X										
210	KL74	10mm x 1.25 LH - NUT	GOLD		X	X	X	X	ARBOR	X			X			X		
ASTRON																		
KFS-4T, 22T, 214, 422, 424, P-750	KL53	8mm x 1.25 x 22 LH - BOLT	PURPLE		X	X	X	X	SILVER	X			X			X		
KFS-4T, S-250, S250 (1983)	KL53	8mm x 1.25 x 22 LH - BOLT	PURPLE		X	X	X	X	SILVER	X			X			X		
S150,250 (1994 & 1996)	KL50	7mm x 1.00 x 22 LH - BOLT	SILVER		X	X	X	X	BRONZ	X			X			X		
S-250 (1988)	KL74	10mm x 1.25 LH - NUT	GOLD		X	X	X	X	ARBOR	X			X			X		
ARIENS																		
BC-350,BC-400,TB-220E,TB260	KL53	8mm x 1.25 x 22 LH - BOLT	PURPLE		X	X	X	X	SILVER	X			X			X		
LT-210, LT-210E	KL71	8mm x 1.25 RH - NUT	BROWN	X	X													
ARIMTSU																		
AC-ZEK,ACC-17,ACD-17,ACD-18	KL53	8mm x 1.25 x 22 LH - BOLT	PURPLE		X	X	X	X	SILVER	X			X			X		
ACE-30,AM-31,AM-31K,AM-40	KL53	8mm x 1.25 x 22 LH - BOLT	PURPLE		X	X	X	X	SILVER	X			X			X		
AM-50,ACC-15,AM-16D,AM.24D	KL53	8mm x 1.25 x 22 LH - BOLT	PURPLE		X	X	X	X	SILVER	X			X			X		
BLACK & DECKER																		
82255,82257,82267,8271-04,8289-4	KL78	3/8-24 - RH - NUT	LIGHT VIOLET	X														
8DP385	KL71	8mm x 1.25 RH - NUT	BROWN	X														
BRUSH KING																		
BK32,BK32LT,BK49,BK85,BK100	KL53	8mm x 1.25 x 22 LH - BOLT	PURPLE		X	X	X	X	SILVER	X			X			X		
BRUSHWACKER																		
LBS-33K,LBS-33KT	KL73	10mm x 1.50 LH - NUT	ORANGE		X	X	X	X										
BUNTON																		
18K,18KT,LBF,LBF-18K	KL52	10mm x 1.25 x 22 LH - BOLT	SILVER		X	X	X	X										
LBF-18KT,LBF-24K,LBF-24KT	KL70	8mm x 1.25 LH - NUT	BLUE		X	X	X	X										
LBS-18K,LBS-24K	KL53	8mm x 1.25 x 22 LH - BOLT	PURPLE		X	X	X	X	SILVER	X			X			X		
LBS-24,LBS-24KT,LBS-33K,LBS-33KT	KL47	10mm x 1.25 LH - NUT	GOLD		X	X	X	X	ARBOR	X			X			X		
CLEAR - A - WAY																		
AK, SK	KL53	8mm x 1.25 x 22 LH - BOLT	PURPLE		X	X	X	X	SILVER	X			X			X		
CRAFTSMAN																		
358-799240	KL78	3/8 - 24 RH - NUT	RED	X	X													
636-79534C, 218151-2816	KL47	10mm x 1.25 LH - NUT	GOLD		X	X	X	X	ARBOR	X			X			X		
636-795451, 795454, 796231	KL72	10mm x 1.00 LH - NUT	BLACK		X	X	X	X										
636-796232, 796233, 796234, 796242	KL72	10mm x 1.00 LH - NUT	BLACK		X	X	X	X										
796243	KL72	10mm x 1.00 LH - NUT	BLACK		X	X	X	X										
9-89658L2, 979551C, 979552C	KL47	10mm x 1.25 LH - NUT	GOLD		X	X	X	X	ARBOR	X			X			X		
CIFARELLI																		
STANDARD	KL74	10mm x 1.25 LH - NUT	GOLD		X	X	X	X	ARBOR	X			X			X		
DAYTON																		
4Z111	KL73	10mm x 1.50 LH - NUT	ORANGE		X	X	X	X										
3Z721, 4Z110	KL78	3/8 - 24 RH - NUT	RED	X	X													

Trimmer Heads - KWIK LOADER



KWIK LOADER APPLICATION GUIDE

MANUFACTURE /MODEL #	REF#	DESCRIPTION	COLOR KWIK LOADER	KL450A	GS750	KL650	KL650F	KL730	STUD KT SERIES	KT30	KT30H	KT30S	KT40	KT40H	KT40S	KT50	KT50H	KT50S
DOLMAR																		
MS-3300, MS-4000, MS-4500	KL76	12mm x 1.50 LH - NUT	GREEN		X	X	X	X										
LT16, LT20, BC210, BC212, BCD212	KL78	3/8 - 24 RH - NUT	RED	X	X													
MS340, LT250	KL74	10mm x 1.25 LH - NUT	GOLD		X	X	X	X	ARBOR	X			X			X		
BC300, BC400, SD330, PRO370 /400	KL52	10mm x 1.25 x 22 LH - BOLT	SILVER		X	X	X	X										
BC250, BC337, BC377, LT225, LT250	KL72	10mm x 1.00 LH - NUT	BLACK		X	X	X	X										
NB03, NB04, NB26, NB40, NB411, NB50	KL72	10mm x 1.00 LH - NUT	BLACK		X	X	X	X										
ECHO																		
CLS4600	KL75	12mm x 1.75 LH-NUT	RED TINT			X	X	X										
GT SERIES	KL78	3/8 - 24 RH-NUT		X	X	X	X											
SRM SERIES	KL74	10mm x 1.25 LH - NUT	GOLD		X	X	X	X	ARBOR	X			X			X		
EFFCO																		
JET-300, JET-400, TIGER-40	KL53	8mm x 1.25 x 22 LH - BOLT	PURPLE		X	X	X	X	SILVER	X			X			X		
FALCON																		
F2601, F2602	KL51	8mm x 1.25 x 22RH-BOLT	GOLD	X	X													
FLYMO																		
FM-10, FM-40D, FM-40S	KL52	10mm x 1.25 x 22 LH - BOLT	SILVER		X	X	X	X										
FM-20	KL53	8mm x 1.25 x 22 LH - BOLT	PURPLE		X	X	X	X	SILVER	X			X			X		
GENIE																		
PC-225	KL78	3/8 - 24 RH- NUT	RED	X	X													
GREEN POWER																		
T16D, T23DX, T31D	KL53	8mm x 1.25 x 22 LH- BOLT	PURPLE		X	X	X	X	SILVER	X			X			X		
GREEN MACHINE																		
1130, 1730, 1800	KL79	7/16 - 20 RH- NUT	SILVER			X	X	X										
1600 (1988), 1800	KL53	8mm x 1.25 x 22 LH- BOLT	PURPLE		X	X	X	X	SILVER	X			X			X		
1900, 1930, 1940, 1950	KL53	8mm x 1.25 x 22 LH- BOLT	PURPLE		X	X	X	X	SILVER	X			X			X		
1700, 2100	KL71	8mm x 1.25 RH- NUT	BROWN	X	X													
2130, 2200, 2230, 2331, 2340, 2500	KL53	8mm x 1.25 x 22 LH- BOLT	PURPLE		X	X	X	X	SILVER	X			X			X		
2500LP, 2800, 2840, 2850, 3000LP	KL53	8mm x 1.25 x 22 LH- BOLT	PURPLE		X	X	X	X	SILVER	X			X			X		
3000SS, 3040, SRM-300SS	KL53	8mm x 1.25 x 22 LH- BOLT	PURPLE		X	X	X	X	SILVER	X			X			X		
3000M, 3040M, 3050M, 3541	KL53	8mm x 1.25 x 22 LH- BOLT	PURPLE		X	X	X	X	SILVER	X			X			X		
D17, D18	KL52	10mm x 1.25 x 22 LH - BOLT	SILVER		X	X	X	X										
GREEN MACHINE / MARK																		
1600 (1983), 1800, 2000, 2200		5/16 - 24 RH- BOLT	SILVER	X	X													
4000, 4000LP, 4500, 4500LP	KL53	8mm x 1.25 x 22 LH - BOLT	PURPLE		X	X	X	X	SILVER	X			X			X		
HOFFCO																		
1600	KL78	3/8 - 24 RH-NUT	RED	X	X													
ALLADIN, CRITTER, CSA	KL78	3/8 - 24 RH-NUT	RED	X	X													
G-1225SPL, GR-320B, GT-160TL, 210	KL78	3/8 - 24 RH-NUT	RED	X	X													
211, 211A, 225, 320B, 320T	KL78	3/8 - 24 RH-NUT	RED	X	X													
P22, PC-22, PC225, PC-380	KL78	3/8 - 24 RH-NUT	RED	X	X													
WT-160HT, 250C, 250HT, 250HTA	KL78	3/8 - 24 RH-NUT	RED	X	X													
WH-SERIES	KL78	3/8 - 24 RH-NUT	RED	X	X													
JP-260, 270, 300, 300A, 300C, 300F	KL74	10mm x 1.25 LH - NUT	GOLD		X	X	X	X	ARBOR	X			X			X		
390, 390XLJP-420, 420D, 660	KL74	10mm x 1.25 LH - NUT	GOLD		X	X	X	X	ARBOR	X			X			X		
300, 390, 420, 420D, 660	KL74	10mm x 1.25 LH - NUT	GOLD		X	X	X	X	ARBOR	X			X			X		
LITTLE WHIZZ, WHIZZ WITCH MP670	KL79	7/16 - 20 RH- NUT	SILVER			X	X	X										

KWIK LOADER APPLICATION GUIDE

MANUFACTURE /MODEL #	REF#	DESCRIPTION	COLOR KWIK LOADER	KL450A	GS750	KL650	KL650F	KL730	STUD KT SERIES	KT30	KT30H	KT30S	KT40	KT40H	KT40S	KT50	KT50H	KT50S
HOMELITE																		
1840 (AFTER 1986)	KL70	8mm x 1.25 LH - NUT	BLUE		X	X	X	X										
24S, 25S, 30S, 38B, 90G, 240G	KL74	10mm x 1.25 LH - NUT	GOLD		X	X	X	X	ARBOR	X			X			X		
HBC-18, 308, 38, 40		1/4-20 X 3/4 RH-BOLT	SILVER	X	X													
HK-16, 23, 24, 30, 33(OLDER)	KL53	8mm x 1.25 x 22 LH - BOLT	PURPLE		X	X	X	X	SILVER	X			X			X		
HK-18, 18B, 24, 28, 33, 38	KL70	8mm x 1.25 LH - NUT	BLUE		X	X	X	X										
HK-30, 48, 50	KL74	10mm x 1.25 LH - NUT	GOLD		X	X	X	X	ARBOR	X			X			X		
HLT-15, 17C, 18, 40	KL79	7/16 - 20 RH- NUT	SILVER		X	X	X											
ST-80, 100, 120 (OLDER MODELS)	KL79	7/16 - 20 RH- NUT	SILVER		X	X	X											
ST-145, 155 (OLDER MODELS)		5/16 - 18 x 3/4 RH - BOLT	SILVER	X	X													
ST-160, 180, 200, 210	KL78	3/8 - 24 RH-NUT	RED	X	X													
ST-385	KL70	8mm x 1.25 LH - NUT	BLUE		X	X	X	X										
ST-385, 485	KL74	10mm x 1.25 LH - NUT	GOLD		X	X	X	X	ARBOR	X			X			X		
HUSQVARNA																		
120R, 125D, 125L, 125LD, 125R, 125RD	KL75	12mm x 1.75 LH-NUT	RED			X	X	X										
125RJ	KL75	12mm x 1.75 LH-NUT	RED			X	X	X										
132L, 132LD, 132R, 132RB, 132RD	KL75	12mm x 1.75 LH-NUT	RED			X	X	X										
132RJ, 140R	KL75	12mm x 1.75 LH-NUT	RED			X	X	X										
160R, 160RX, 165R, 165RX	KL75	12mm x 1.75 LH-NUT	RED			X	X	X										
16R, 18R, 22R, 24R, (After 86)	KL75	12mm x 1.75 LH-NUT	RED			X	X	X										
25R, 25RL, 39R (After 86)	KL75	12mm x 1.75 LH-NUT	RED			X	X	X										
22RL, 36R, 39R	KL75	12mm x 1.75 LH-NUT	RED			X	X	X										
240R, 244R, 244RX, 245R	KL75	12mm x 1.75 LH-NUT	RED			X	X	X										
245RX, 250RX, 265RX	KL75	12mm x 1.75 LH-NUT	RED			X	X	X										
140	KL73	10mm x 1.50 LH- NUT	ORANGE			X	X	X										
24R (Up to S# 603702)	KL50	7MM X 1.00 X 22lh - BOLT	SILVER			X	X	X										
24R (After S# 603702)	KL70	8mm x 1.25 LH - NUT	BLUE		X	X	X	X										
26LC, 26RLC, 320B	KL78	3/8 - 24 RH-NUT	RED	X	X													
32L, 32LC, 320B	KL78	3/8 - 24 RH-NUT	RED	X	X													
32r, 32rl, 32rlc, (90, 91)	KL77	3/2 - 24 LH- NUT	YELLOW		X	X	X	X										
X32L	KL77	3/2 - 24 LH- NUT	YELLOW		X	X	X	X										
225L, 225RL (1995)	KL74	10mm x 1.25 LH - NUT	GOLD		X	X	X	X	ARBOR		X			X				X
324LX, 324LDX, 327LS, 128L, 128LDX	KL74	10mm x 1.25 LH - NUT	GOLD		X	X	X	X			X			X				X
326LDX, 223L, 326LS323L	KL74	10mm x 1.25 LH - NUT	GOLD		X	X	X	X			X			X				X
JOHN DEERE																		
21C, 82G, 83G, 85G, 100G, 110G	KL78	3/8 - 24 RH-NUT	RED	X	X													
200G, 210, 220G, 250	KL78	3/8 - 24 RH-NUT	RED	X	X													
21S, 24S, 25S, 30S, 38B, 90G	KL74	10mm x 1.25 LH - NUT	GOLD		X	X	X	X	ARBOR	X			X			X		
240G, 260G, 300G, 350G, 380G, 450G	KL74	10mm x 1.25 LH - NUT	GOLD		X	X	X	X	ARBOR	X			X			X		
826, 2056, XT120 (2005)	KL74	10mm x 1.25 LH - NUT	GOLD		X	X	X	X	ARBOR	X			X			X		
TY2542	KL79	7/16 x 20 RH- NUT	SILVER		X	X	X											
XT120 (2004)	KL70	8mm x 1.25 LH - NUT	BLUE		X	X	X	X										
JONSERED																		
R45, RS-38, 35, 52, 60, 601	KL75	12mm x 1.75 LH-NUT	RED			X	X	X										
GR26L, 26D, 32L, 32D, 36	KL75	12mm x 1.75 LH-NUT	RED			X	X	X										
BR SERIES, BR 400, BR450	KL53	8mm x 1.25 x 22 LH- BOLT	PURPLE		X	X	X	X	SILVER	X			X			X		
LR-200, 220L, 260B, 300, 320	KL53	8mm x 1.25 x 22 LH- BOLT	PURPLE		X	X	X	X	SILVER	X			X			X		
400, 420, 450, 460	KL53	8mm x 1.25 x 22 LH- BOLT	PURPLE		X	X	X	X	SILVER	X			X			X		
GR20206L, TIGER 40	KL74	10mm x 1.25 LH - NUT	GOLD		X	X	X	X	ARBOR	X			X			X		

Trimmer Heads - KWIK LOADER



KWIK LOADER APPLICATION GUIDE

MANUFACTURE /MODEL #	REF#	DESCRIPTION	COLOR KWIK LOADER	KL450A	GS750	KL650	KL650F	KL730	STUD KT SERIES	KT30	KT30H	KT30S	KT40	KT40H	KT40S	KT50	KT50H	KT50S	
KAAZ																			
20 SERIES, 30 SERIES				KL70	8mm x 1.25 LH - NUT	BLUE		X	X	X	X								
F30D, G3CR, G4DR, J40D				KL70	8mm x 1.25 LH - NUT	BLUE		X	X	X	X								
KLQ-20, KQ-30B, KQ-40, KQP-20				KL70	8mm x 1.25 LH - NUT	BLUE		X	X	X	X								
KQP-20BL, KT-15R, KT-17R, KT-18R				KL70	8mm x 1.25 LH - NUT	BLUE		X	X	X	X								
LT18R, RQ-20, TPQ-20				KL70	8mm x 1.25 LH - NUT	BLUE		X	X	X	X								
U10, U20, QU-20B				KL70	8mm x 1.25 LH - NUT	BLUE		X	X	X	X								
K20, K2Q20, KLQ, KQ, KQ-20				KL53	8mm x 1.25 x 22 LH - BOLT	PURPLE		X	X	X	X	SILVER	X			X			X
KQ-50A, VP-20				KL53	8mm x 1.25 x 22 LH - BOLT	PURPLE		X	X	X	X	SILVER	X			X			X
J4BD, J40FD, J480, JQ-40, JQ-50				KL74	10mm x 1.25 LH - NUT	GOLD		X	X	X	X	ARBOR	X			X			X
K10, K40D, KQ-30, KQ-30B, KQ-30NE				KL74	10mm x 1.25 LH - NUT	GOLD		X	X	X	X	ARBOR	X			X			X
KQ-50A, KT-10, KT-30R, RQ-30, T50				KL74	10mm x 1.25 LH - NUT	GOLD		X	X	X	X	ARBOR	X			X			X
V15, V18, V20B, V25, V35, V40				KL74	10mm x 1.25 LH - NUT	GOLD		X	X	X	X	ARBOR	X			X			X
T420				KL74	10mm x 1.25 LH - NUT	GOLD		X	X	X	X	ARBOR	X			X			X
V20				KL50	7mm x 1.00 x 22 LH - BOLT	SILVER		X	X	X	X	BRONZ	X			X			X
LAWNBOY																			
1460				KL79	7/16 x 20 RH - NUT	SILVER		X	X	X									
1480				KL74	10mm x 1.25 LH - NUT	GOLD		X	X	X	X	ARBOR	X			X			X
61620, 61638					5/16 - 24 RH - BOLT	SILVER	X	X											
1400CL				KL78	3/8 - 24 RH - NUT	RED	X	X											"SS2
SERIES 1150, 1400																			
MAKITA																			
RBC-250, RBC-253, RST-250				KL71	8mm x 1.25 RH - NUT	BLUE		X	X	X	X								
RBC-25A, 221, 230, 251, 252				KL70	8mm x 1.25 LH - NUT	BLUE		X	X	X	X								
RBC-260, 261, 310, 311				KL70	8mm x 1.25 LH - NUT	BLUE		X	X	X	X								
MARUYAMA																			
23				KL73	10mm x 1.50 LH - NUT	ORANGE			X	X	X								
32, 32, G3, G5, G13K				KL52	10mm x 1.25 x 22 LH - BOLT	SILVER		X	X	X	X								
241, 326, 402				KL53	8mm x 1.25 x 22 LH - BOLT	PURPLE		X	X	X	X	SILVER	X			X			X
BC-184, 300, 241, 260, 320, 320H				KL53	8mm x 1.25 x 22 LH - BOLT	PURPLE		X	X	X	X	SILVER	X			X			X
BC-326, 402, MSERIES, ML-235				KL53	8mm x 1.25 x 22 LH - BOLT	PURPLE		X	X	X	X	SILVER	X			X			X
BC-184C				KL71	8mm x 1.25 RH - NUT	BLUE		X	X	X	X								
G8K				KL74	10mm x 1.25 LH - NUT	GOLD		X	X	X	X	ARBOR	X			X			X
BST-23				KL70	8mm x 1.25 LH - NUT	BLUE		X	X	X	X								
McCULLOCH																			
60, 60A, 60S, 65, 70, 75, 80, 80A				KL78	3/8 - 24 RH - NUT	RED	X	X											
EB-I, EB-IS, EB-II, EB-IIS, EB-IIIV				KL78	3/8 - 24 RH - NUT	RED	X	X											
EB-III, EB-IIIS, EB-IIISL, EB-IIISX				KL78	3/8 - 24 RH - NUT	RED	X	X											
EB-200, EB-220, EB-240				KL78	3/8 - 24 RH - NUT	RED	X	X											
MAC-230				KL78	3/8 - 24 RH - NUT	RED	X	X											
MAC-65SL, 80SL, 85SL, 99SL				KL78	3/8 - 24 RH - NUT	RED	X	X											
PROSCRAPER 15X				KL78	3/8 - 24 RH - NUT	RED	X	X											
TITAN 2100, 2200, 2500				KL78	3/8 - 24 RH - NUT	RED	X	X											
MCAC-32, 250				KL50	7mm x 1.00 x 22 LH - BOLT	SILVER		X	X	X	X	BRONZ	X			X			X
S300, S350				KL50	7mm x 1.00 x 22 LH - BOLT	SILVER		X	X	X	X	BRONZ	X			X			X
MAC-22, MAC-23				KL53	8mm x 1.25 x 22 LH - BOLT	PURPLE		X	X	X	X	SILVER	X			X			X
PRO-SCRAPER 1, II, IIHD, IV				KL53	8mm x 1.25 x 22 LH - BOLT	PURPLE		X	X	X	X	SILVER	X			X			X
MAC-17, MAC-25				KL71	8mm x 1.25 RH - NUT	BLUE		X	X	X	X								
85A, 85S, 85SL, 90, 95, 95A, 99A				KL74	10mm x 1.25 LH - NUT	GOLD		X	X	X	X	ARBOR	X			X			X
EB-11VSL				KL74	10mm x 1.25 LH - NUT	GOLD		X	X	X	X	ARBOR	X			X			X

KWIK LOADER APPLICATION GUIDE

MANUFACTURE /MODEL #	REF#	DESCRIPTION	COLOR	KL450A	GS750	KL650	KL650F	KL730	STUD KT SERIES	KT30	KT30H	KT30S	KT40	KT40H	KT40S	KT50	KT50H	KT50S
McCULLOCH continued																		
EB-280, EB-286BC, EB-286BCS	KL74	10mm x 1.25 LH - NUT	GOLD		X	X	X	X	ARBOR	X			X			X		
FM-3000	KL74	10mm x 1.25 LH - NUT	GOLD		X	X	X	X	ARBOR	X			X			X		
MAC-100a, 270, 90, 95	KL74	10mm x 1.25 LH - NUT	GOLD		X	X	X	X	ARBOR	X			X			X		
PRO-SCRAPER EB I, II, III, IV, V	KL74	10mm x 1.25 LH - NUT	GOLD		X	X	X	X	ARBOR	X			X			X		
SM100	KL74	10mm x 1.25 LH - NUT	GOLD		X	X	X	X	ARBOR	X			X			X		
TITAN 2300, 2300AV, 2310, 2360	KL74	10mm x 1.25 LH - NUT	GOLD		X	X	X	X	ARBOR	X			X			X		
TITAN 2400, 2599, 3000, 3900	KL74	10mm x 1.25 LH - NUT	GOLD		X	X	X	X	ARBOR	X			X			X		
TITAN 2500AV, 26565AV	KL74	10mm x 1.25 LH - NUT	GOLD		X	X	X	X	ARBOR	X			X			X		
MAC-57	KL52	10mm x 1.25 x 22 LH - BOLT	SILVER		X	X	X	X										
MORCUT (SHIKUTANI)																		
160, 200, LRD-200	KL70	8mm x 1.25 LH - NUT	BLUE		X	X	X	X										
400, 400BEX EARLY MODELS	KL72	10mm x 1.00 LH - NUT	BLACK		X	X	X	X										
400, LRD-400	KL74	10mm x 1.25 LH - NUT	GOLD		X	X	X	X	ARBOR	X			X			X		
MOUNTFIELD																		
MULTI-TRIM 16, 22, 23, 40	KL53	8mm x 1.25 x 22 LH - BOLT	PURPLE		X	X	X	X	SILVER	X			X			X		
MULTI-TRIM 31, 37	KL52	10mm x 1.25 x 22 LH - BOLT	SILVER		X	X	X	X										
NIKKARI																		
24, 37	KL53	8mm x 1.25 x 22 LH - BOLT	PURPLE		X	X	X	X	SILVER	X			X			X		
OLYMPYK																		
B 260, 260L, 300, 400, 500, PRO-38	KL53	8mm x 1.25 x 22 LH - BOLT	PURPLE		X	X	X	X	SILVER	X			X			X		
PARAMOUNT																		
2248, 2645	KL78	3/8 - 24 RH-NUT	RED	X	X													
PARTNER																		
BT 160, 220, 250	KL53	8mm x 1.25 x 22 LH - BOLT	PURPLE		X	X	X	X	SILVER	X			X			X		
SPARTAN	KL53	8mm x 1.25 x 22 LH - BOLT	PURPLE		X	X	X	X	SILVER	X			X			X		
BT360	KL75	12mm x 1.75 LH-NUT	RED			X	X	X										
PIONEER																		
B180, 250	KL53	8mm x 1.25 x 22 LH - BOLT	PURPLE		X	X	X	X	SILVER	X			X			X		
15, F16, S16, S24, SF-24	KL70	8mm x 1.25 LH - NUT	BLUE		X	X	X	X										S33,
S41, S51, SCC	KL74	10mm x 1.25 LH - NUT	GOLD		X	X	X	X	ARBOR	X			X			X		
B380, 440	KL75	12mm x 1.75 LH - NUT	RED TINT			X	X	X										
POULAN																		
111, 114, 117, 175, 195	KL78	3/8 - 24 RH-NUT	RED	X	X													
559, 609, 700, 800	KL78	3/8 - 24 RH-NUT	RED	X	X													
1350, 1500, 2400, 2500	KL78	3/8 - 24 RH-NUT	RED	X	X													
2600, 2610, 2615, 2700	KL78	3/8 - 24 RH-NUT	RED	X	X													
PROII4, PROIII	KL78	3/8 - 24 RH-NUT	RED	X	X													
150, 200, 900, 2620, 2820	KL74	10mm x 1.25 LH - NUT	GOLD		X	X	X	X	ARBOR	X			X			X		
1000	KL73	10mm x 1.50 LH - NUT	ORANGE		X	X	X	X										
RED MAX																		
BC-220DL, BC-221DL	KL50	7mm x 1.00 x 22 LH - BOLT	SILVER		X	X	X	X	BRONZ	X			X			X		
BC-430DWM, BC-440DWM	KL53	8mm x 1.25 x 22 LH - BOLT	PURPLE		X	X	X	X	SILVER	X			X			X		
BC-260DL, BC-340DL, BC-430, BC-440	KL53	8mm x 1.25 x 22 LH - BOLT	PURPLE		X	X	X	X	SILVER	X			X			X		
BT-17, BT-200, BT-25, SGC-220DL	KL71	8mm x 1.25 RH - NUT	BLUE		X	X	X	X										
BC-225DL, BCZ-2600-S	KL73	10mm x 1.50 LH - NUT	ORANGE		X	X	X	X										

Trimmer Heads - KWIK LOADER



KWIK LOADER APPLICATION GUIDE

MANUFACTURE /MODEL #	REF#	DESCRIPTION	COLOR KWIK LOADER	KL450A	GS750	KL650	KL650F	KL730	STUD KT SERIES	KT30	KT30H	KT30S	KT40	KT40H	KT40S	KT50	KT50H	KT50S
ROBIN																		
770	KL70	8mm x 1.25 LH - NUT	BLUE		X	X	X	X										
NB 02, NB 02 2A, NB 02 2B	KL70	8mm x 1.25 LH - NUT	BLUE		X	X	X	X										
NB16, 16F, 16QF, 16T, 26, 211, 231	KL70	8mm x 1.25 LH - NUT	BLUE		X	X	X	X										
252, 253	KL70	8mm x 1.25 LH - NUT	BLUE		X	X	X	X										
NB 23, 23S, 26 171	KL71	8mm x 1.25 RH - NUT	BLUE		X	X	X	X										
NB 03 2D, NB 04, NB 04 2, NB 04 2D	KL72	10mm x 1.00 LH - NUT	BLACK		X	X	X	X										
250, (F SERIES)	KL72	10mm x 1.00 LH - NUT	BLACK		X	X	X	X										
ROBIN / NAC																		
NB 26 AU, 27, 211C, 231C	KL70	8mm x 1.25 LH - NUT	BLUE		X	X	X	X										
NB 411, NB 30, NB 50, NB 50L	KL72	10mm x 1.00 LH - NUT	BLACK		X	X	X	X										
RYAN																		
262, 263, 264, 265, 274, 275, 284, 285	KL30	3/8 x 24 RH - BOLT	GREEN	X	X	X	X	X		X			X			X		
500, 520, 500-1, 520-1	KL30	3/8 x 24 RH - BOLT	GREEN	X	X	X	X	X		X			X			X		
264-1, 264-2, 265-1, 265-P, 275-1	KL30	3/8 x 24 RH - BOLT	GREEN	X	X	X	X	X		X			X			X		
B260, B261, B270, B280	KL30	3/8 x 24 RH - BOLT	GREEN	X	X	X	X	X		X			X			X		
284-2, 285-1, 540, 540-1, 580, 580-1		7/16 x 14 - RH - NUT																
RYOBI																		
RS-740 SERIES		7/16 x 14 - RH - NUT																
700R, 710R, 720R, 764R, 770R	KL30	3/8 x 24 RH - BOLT	GREEN	X	X	X	X	X		X			X			X		
GAS HORNET, GAS HORNET RGH 600	KL70	8mm x 1.25 LH - NUT	BLUE		X	X	X	X										
RGH600	KL70	8mm x 1.25 LH - NUT	BLUE		X	X	X	X										
WEED HORNET RWH900	KL70	8mm x 1.25 LH - NUT	BLUE		X	X	X	X										
SRUB HORNET RSH900, RSH900HB	KL53	8mm x 1.25 x 22 LH - BOLT	PURPLE		X	X	X	X	SILVER	X			X			X		
RSH-1100MK2	KL73	10mm x 1.50 LH - NUT	ORANGE		X	X	X	X										
SACHS DOLMAR																		
LT-16, 210	KL78	3/8 x 24 RH - NUT	RED	X	X													
C20, T18, T20	KL50	7mm x 1.00 x 22 LH - BOLT	SILVER		X	X	X	X	BRONZ	X			X			X		
BP-35, C25, F20, T25	KL53	8mm x 1.25 x 22 LH - BOLT	PURPLE		X	X	X	X	SILVER	X			X			X		
F18, F21	KL71	8mm x 1.25 RH - NUT	BLUE		X	X	X	X										
LT-154	KL70	8mm x 1.25 LH - NUT	BLUE		X	X	X	X										
B45, B330,	KL52	10mm x 1.25 x 22 LH - BOLT	SILVER		X	X	X	X										
BC-210, BC-212, BC-250, BC-330	KL52	10mm x 1.25 x 22 LH - BOLT	SILVER		X	X	X	X										
BC-400, C35	KL52	10mm x 1.25 x 22 LH - BOLT	SILVER		X	X	X	X										
BC-225, BC-337, BC-377	KL72	10mm x 1.00 LH - NUT	BLACK		X	X	X	X										
LT-225, LT-250	KL72	10mm x 1.00 LH - NUT	BLACK		X	X	X	X										
SEARS																		
636-79534, 636-79556	KL78	3/8 x 24 RH - NUT	RED	X	X													
7957, 7958, 7968, 7969	KL78	3/8 x 24 RH - NUT	RED	X	X													
77959, 79534, 79542, 79542, 79556	KL78	3/8 x 24 RH - NUT	RED	X	X													
79558, 79611, 79612, 79613, 79614	KL78	3/8 - 24 RH - NUT	RED	X	X													
79621, 79710, 79711, 79712, 79713	KL78	3/8 x 24 RH - NUT	RED	X	X													
79721, 79812, 79813, 79714, 79721	KL78	3/8 x 24 RH - NUT	RED	X	X													
79726	KL78	3/8 x 24 RH - NUT	RED	X	X													
636-79545, 636-79558	KL72	10mm x 1.00 LH - NUT	BLACK		X	X	X	X										
21851-2816, 28151-161	KL74	10mm x 1.25 LH - NUT	GOLD		X	X	X	X	ARBOR	X			X			X		
SEARS/WEED EATER - GTI 18	KL52	10mm x 1.25 x 22 LH - BOLT	SILVER		X	X	X	X										
636-79549, 636-79555, 79549, 79555	KL73	10mm x 1.50 LH - NUT	ORANGE		X	X	X	X										
79534, 79544, 79551	KL78	3/8 x 24 RH - NUT	RED	X	X													
79552, 79555, 79556	KL78	3/8 x 24 RH - NUT	RED	X	X													

KWIK LOADER APPLICATION GUIDE

MANUFACTURE /MODEL #	REF#	DESCRIPTION	COLOR	KL450A	GS750	KL650	KL650F	KL730	STUD KT SERIES	KT30	KT30H	KT30S	KT40	KT40H	KT40S	KT50	KT50H	KT50S
SHIMITSU																		
PW-3200EI, SMT-2600	KL53	8mmx 1.25 x 22 LH- BOLT	PURPLE		X	X	X	X	SILVER	X			X			X		
SHINDAIWA																		
LT-18, LT-20, T-18, T-20, C-20, T270	KL50	7mm x 1.00 x 22 LH - BOLT	SILVER		X	X	X	X	BRONZ	X			X			X		
BP-35C-25, BP-45, C25, C27, F18, F20	KL53	8mmx 1.25 x 22 LH- BOLT	PURPLE		X	X	X	X	SILVER	X			X			X		
R20, R25, R35, T25, T250, T270	KL53	8mmx 1.25 x 22 LH- BOLT	PURPLE		X	X	X	X	SILVER	X			X			X		
B40, B45, C35, RC45, BP35	KL52	10mm x 1.25 x 22 LH - BOLT	SILVER		X	X	X	X										
SHINGU SHOKO																		
180D, 180DE, 210D, S100, 150, M 16		6mm x 1.00 LH - BOLT																
200, 250, 350, S23PNC	KL50	7mm x 1.00 x 22 LH - BOLT	SILVER		X	X	X	X	BRONZ	X			X			X		
650, P 750	KL53	8mmx 1.25 x 22 LH- BOLT	PURPLE		X	X	X	X	SILVER	X			X			X		
BELL	KL73	10mm x 1.50 LH - NUT	ORANGE		X	X	X	X										
SNAPPER																		
14CST, 212CST, 213CST, 214CST	KL78	3/8 x 24 RH- NUT	RED	X	X													
210SS, 211SS, 211SST, 215SST	KL74	10mm x 1.25 LH - NUT	GOLD		X	X	X	X	ARBOR	X			X			X		
240SST, 245SST, 310, 410, 410SST	KL74	10mm x 1.25 LH - NUT	GOLD		X	X	X	X	ARBOR	X			X			X		
P212LST, P214DCST, P215SST	KL74	10mm x 1.25 LH - NUT	GOLD		X	X	X	X	ARBOR	X			X			X		
SST2111, SST2401, SST4111	KL74	10mm x 1.25 LH - NUT	GOLD		X	X	X	X	ARBOR	X			X			X		
S315NGBC	KL74	10mm x 1.25 LH - NUT	GOLD		X	X	X	X	ARBOR	X			X			X		
SOLO																		
120, 124, 126, 135, 140	KL74	10mm x 1.25 LH - NUT	GOLD		X	X	X	X	ARBOR	X			X			X		
S100, S122, S200, S300, S400	KL74	10mm x 1.25 LH - NUT	GOLD		X	X	X	X	ARBOR	X			X			X		
7	KL52	10mm x 1.25 x 22 LH - BOLT	SILVER		X	X	X	X										
9	KL54	10mm x 1.50 LH - BOLT	GOLD		X	X	X	X	ARBOR	X			X			X		
14	KL74	10mm x 1.25 LH - NUT	GOLD		X	X	X	X	ARBOR	X			X			X		
21	KL73	10mm x 1.50 LH - NUT	ORANGE		X	X	X	X										
400, 664, AC-2, AC-3		10mm x 1.50 RH BOLT																
STHIL																		
FS-51AVE	KL77	3/8 x 24 FLH	YELLOW		X	X	X	X										
FS-50, FS-50E, FS-51, FS-60, FS-61	KL53	8mmx 1.25 x 22 LH- BOLT	PURPLE		X	X	X	X	SILVER	X			X			X		"FS-65,
FS-80, FS-90, 90AVE, 91AVE	KL53	8mmx 1.25 x 22 LH- BOLT	PURPLE		X	X	X	X	SILVER	X			X			X		
FR-106, FS-106, FS-106AVE	KL72	10mm x 1.00 LH - NUT	BLACK		X	X	X	X				X			X			X
FS-40, FS044, FS-74, FS-76	KL72	10mm x 1.00 LH - NUT	BLACK		X	X	X	X				X			X			X
FS-52AVRE, FS-56AVE, FS-56AVRE	KL72	10mm x 1.00 LH - NUT	BLACK		X	X	X	X				X			X			X
FS-62AVRE, FS-66AVE, FS-66AVRE	KL72	10mm x 1.00 LH - NUT	BLACK		X	X	X	X				X			X			X
FS-81AVE, FS-81AVRE, FS-86AVE	KL72	10mm x 1.00 LH - NUT	BLACK		X	X	X	X				X			X			X
FS-86AVRE, FS-96AVE FS80R, FS80	KL72	10mm x 1.00 LH - NUT	BLACK		X	X	X	X				X			X			X
FS90R, FS90, FS100RXFS110R, FS110	KL73	10mm x 1.00 LH - NUT	BLACK		X	X	X	X				X			X			X
FS130, FS130R, FS250, FS250R, FS310	KL74	10mm x 1.00 LH - NUT	BLACK		X	X	X	X				X			X			X
FS106, FS108, FS44, FS44J, FS44R	KL75	10mm x 1.00 LH - NUT	BLACK		X	X	X	X				X			X			X
FS48, FS52, FS52AVE, FS52AVRE	KL76	10mm x 1.00 LH - NUT	BLACK		X	X	X	X				X			X			X
FS52AVRE, FS56, FS56AVRE	KL77	10mm x 1.00 LH - NUT	BLACK		X	X	X	X				X			X			X
FS62, FS66, FA62AVE, FS56AVE	KL78	10mm x 1.00 LH - NUT	BLACK		X	X	X	X				X			X			X
FS66AVRE, SS-100-RX	KL72	10mm x 1.00 LH - NUT	BLACK		X	X	X	X				X			X			X
FS-150, FS-200AV, FS-202, FS-353AV	KL76	12mm x 1.50 LH - NUT	GREEN			X	X	X										
FS-151, FS-160, FS-180, FS-280K	KL75	12mm x 1.75 LH - NUT	RED TINT			X	X	X										

Trimmer Heads - KWIK LOADER



KWIK LOADER APPLICATION GUIDE

MANUFACTURE /MODEL #	REF#	DESCRIPTION	COLOR KWIK LOADER	KL450A	GS750	KL650	KL650F	KL730	STUD KT SERIES	KT30	KT30H	KT30S	KT40	KT40H	KT40S	KT50	KT50H	KT50S
TANAKA																		
TBC-2800	KL78	3/8x24 RH-NUT	RED	X	X													
TBC-160, TBC-202, TBC-205	KL70	8mm x 1.25 LH - NUT	BLUE		X	X	X	X										
TBC-210, TBS-2110, TBC-2510	KL70	8mm x 1.25 LH - NUT	BLUE		X	X	X	X										
AST-700, AST-7000, AST-7000S	KL53	8mm x 1.25 x 22 LH - BOLT	PURPLE		X	X	X	X	SILVER	X			X			X		
SUM301, SUM-321, TB220, TB220E	KL53	8mm x 1.25 x 22 LH - BOLT	PURPLE		X	X	X	X	SILVER	X			X			X		
TBS-16D, TBC-215, TBC-22	KL53	8mm x 1.25 x 22 LH - BOLT	PURPLE		X	X	X	X	SILVER	X			X			X		
TBC-220SS, TBC-232, TBC-233	KL53	8mm x 1.25 x 22 LH - BOLT	PURPLE		X	X	X	X	SILVER	X			X			X		
TBC-240, TBC-250, TBC-262	KL53	8mm x 1.25 x 22 LH - BOLT	PURPLE		X	X	X	X	SILVER	X			X			X		
TBC-265, TBC-301, TBC-322, TBC-325	KL53	8mm x 1.25 x 22 LH - BOLT	PURPLE		X	X	X	X	SILVER	X			X			X		
LT-210, LT-210E, NC-301	KL74	10mm x 1.25 LH - NUT	GOLD		X	X	X	X	ARBOR	X			X			X		
AST-5000, BC-350, BC-400	KL52	10mm x 1.25 x 22 LH - BOLT	SILVER		X	X	X	X										
TBC-300, TBC-321, TBC-322, TBC-355	KL52	10mm x 1.25 x 22 LH - BOLT	SILVER		X	X	X	X										
TBC-373, TBC-422, TBC-425, TBC-500	KL52	10mm x 1.25 x 22 LH - BOLT	SILVER		X	X	X	X										
TBC-501, TBC-4000, TBC-4500	KL52	10mm x 1.25 x 22 LH - BOLT	SILVER		X	X	X	X										
TBC-3100, TN-3300(BRAIN)	KL52	10mm x 1.25 x 22 LH - BOLT	SILVER		X	X	X	X										
TAS																		
HD180, PARKLANDER	KL70	8mm x 1.25 LH - NUT	BLUE		X	X	X	X										
TBC-23, TBC-23F, TBC-30	KL70	8mm x 1.25 LH - NUT	BLUE		X	X	X	X										
NC301, TBC-16, TBC-20, TBC-30F	KL53	8mm x 1.25 x 22 LH - BOLT	PURPLE		X	X	X	X	SILVER	X			X			X		
TBC-30R, TBC037	KL53	8mm x 1.25 x 22 LH - BOLT	PURPLE		X	X	X	X	SILVER	X			X			X		
QUM2, SUM3	KL74	10mm x 1.25 LH - NUT	GOLD		X	X	X	X	ARBOR	X			X			X		
TILTON																		
PRO-40	KL75	12mm x 1.75 LH - NUT	RED TINT			X	X	X										
PRO-38, PRO-40	KL53	8mm x 1.25 x 22 LH - BOLT	PURPLE		X	X	X	X	SILVER	X			X			X		
TORO																		
TC-350, TC-400, TC-650		5/16 X 18 RH - NUT																
1000, 2000, 2100	KL74	10mm x 1.25 LH - NUT	GOLD		X	X	X	X	ARBOR	X			X			X		
30900, 30910, 30920	KL74	10mm x 1.25 LH - NUT	GOLD		X	X	X	X	ARBOR	X			X			X		
51550, 51603, 51604, 51606, 51607	KL74	10mm x 1.25 LH - NUT	GOLD		X	X	X	X	ARBOR	X			X			X		
51608, CL-700, CL-2100	KL74	10mm x 1.25 LH - NUT	GOLD		X	X	X	X	ARBOR	X			X			X		
TC SERIES	KL74	10mm x 1.25 LH - NUT	GOLD		X	X	X	X	ARBOR	X			X			X		
VANDERMOLEN																		
L1845E, L2415E, L2415G, L2815G	KL53	8mm x 1.25 x 22 LH - BOLT	PURPLE		X	X	X	X	SILVER	X			X			X		
L3335G, X1845E, X2415E, X3335E	KL53	8mm x 1.25 x 22 LH - BOLT	PURPLE		X	X	X	X	SILVER	X			X			X		
WEEDEATER																		
500, 507, 587, 599, 600, 607, 608, 609	KL78	3/8x24 RH-NUT	RED	X	X													
1400, 1500, 1600, 1700, 3500	KL78	3/8x24 RH-NUT	RED	X	X													
WEEDWACKER	KL78	3/8x24 RH-NUT	RED	X	X													
XR-20, XR-30, XR-50, XR-70, XR-75	KL78	3/8x24 RH-NUT	RED	X	X													
XR-80, XR-85	KL78	3/8x24 RH-NUT	RED	X	X													
XT-20, XT-50, XT-85, XT-100, XT-115	KL78	3/8x24 RH-NUT	RED	X	X													
XT-120, XT-125, XT-125B, XT-130A	KL78	3/8x24 RH-NUT	RED	X	X													
YP-SERIES	KL78	3/8x24 RH-NUT	RED	X	X													
GTI-15, GTI-17, GTI-18, GTI-18B	KL78	3/8x24 RH-NUT	RED	X	X													
GTI19 1989 Later Models, XR0125	KL77	3/8x24 FLH	YELLOW		X	X	X	X										
650, 657, 670, 707, 978	KL79	7/16x20 RH- NUT	SILVER		X	X	X											
3500 Later Models, XR-95	KL79	7/16x20 RH- NUT	SILVER		X	X	X											
22	KL53	8mm x 1.25 x 22 LH - BOLT	PURPLE		X	X	X	X	SILVER	X			X			X		
826		10mm x 1.25 RH - NUT																

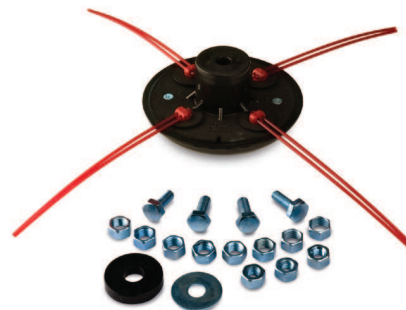
KWIK LOADER APPLICATION GUIDE

MANUFACTURE /MODEL #	REF#	DESCRIPTION	COLOR	KL450A	GS750	KL650	KL650F	KL730	STUD KT SERIES	KT30	KT30H	KT30S	KT40	KT40H	KT40S	KT50	KT50H	KT50S	
WEEDEATER continued																			
PRO-150, PRO-200, XR-100, XR-105	KL74	10mm x 1.25 LH - NUT	GOLD		X	X	X	X	ARBOR	X			X			X			
YP-140	KL74	10mm x 1.25 LH - NUT	GOLD		X	X	X	X	ARBOR	X			X			X			
YP-160, YP-200		10mm x 1.50 RH BOLT																	
1000	KL73	10mm x 1.50 LH - NUT	ORANGE		X	X	X	X											
GTI-19 Later Models	KL73	10mm x 1.50 LH - NUT	ORANGE		X	X	X	X											
PRO-100, PRO-105, XR90, XR-200	KL73	10mm x 1.50 LH - NUT	ORANGE		X	X	X	X											
YP-140 (Older Model)	KL73	10mm x 1.50 LH - NUT	ORANGE		X	X	X	X											
WESTMAC																			
16, 23, 31	KL53	8mm x 1.25 x 22 LH - BOLT	PURPLE		X	X	X	X	SILVER	X			X					X	
30, 50	KL72	10mm x 1.00 LH - NUT	BLACK		X	X	X	X											
XENOA																			
BCD	KL50	7mm x 1.00 x 22 LH - BOLT	SILVER		X	X	X	X	BRONZ	X			X					X	
BC-15, FBC-12, FDC-26	KL53	8mm x 1.25 x 22 LH - BOLT	PURPLE		X	X	X	X	SILVER	X			X					X	
FBC-33	KL74	10mm x 1.25 LH - NUT	GOLD		X	X	X	X	ARBOR	X			X					X	
YAMICHI																			
YM1600T	KL50	7mm x 1.00 x 22 LH - BOLT	SILVER		X	X	X	X	BRONZ	X			X					X	
WM-2400TI, YM-1800T, YM-3200BT	KL74	10mm x 1.25 LH - NUT	GOLD		X	X	X	X	ARBOR	X			X					X	
YAZOO																			
TBC-31	KL51	8mm x 1.25 x 22 RH - BOLT	PURPLE		X	X	X	X	SILVER	X			X					X	
YB-16, YBC-16, YBC-23, 23, 31	KL53	8mm x 1.25 x 22 LH - BOLT	PURPLE		X	X	X	X	SILVER	X			X					X	

PIVOTRIM® PRO TRIMMER HEADS

Part # P55490

- Pivotrim Classic Trimmer Head
- Fits 99% of all gas trimmers
- Easy to load and install
- Uses less line
- Uses .095 line or smaller
- Up to 8 lines



Part # P55491

- Pivotrim Pro Trimmer Head
- Fits 99% of straight shaft gas trimmers
- Quick reloads and uses less line
- Uses .105 line or smaller
- Designed for professional landscapers



MAGNUM GATOR LINE

- Heavy duty professional dual polymer line
- Outer layer prevents welding
- High strength inner core resists breaking
- Long life, excellent strength

Part #	Size	Length
SQUARE LINE		
.095 gauge line		
P69190	50' donut	50'
P22995	1/2 lb. donut	113'
P22495	1 lb. donut	227'
P22895	3 lb. spool	681'
P22095	5 lb. spool	1134'
.105 gauge line		
P69191	50' donut	50'
P22905	1/2 lb. donut	90'
P22405	1 lb. donut	179'
P22805	3 lb. spool	538'
P22005	5 lb. spool	896'
.130 gauge line		
P69194	50' donut	50'
P22930	1/2 lb. donut	60'
P22430	1 lb. donut	120'
P22830	3 lb. spool	360'
P22030	5 lb. spool	600'
ROUND LINE		
.095 gauge line		
P69195	50' donut	50'
P22295	1/2 lb. donut	144'
P22395	1 lb. donut	289'
P22195	3 lb. spool	867'
P22595	5 lb. spool	1445'
.105 gauge line		
P69196	50' donut	50'
P22205	1/2 lb. donut	114'
P22305	1 lb. donut	228'
P22105	3 lb. spool	685'
P22505	5 lb. spool	1142'
.130 gauge line		
P69197	50' donut	50'
P22230	1/2 lb. donut	76'
P22330	1 lb. donut	153'
P22130	3 lb. spool	459'
P22530	5 lb. spool	764'



COMMERCIAL/PRO TRIMMER LINE

Part #	Size	Length
SQUARE LINE		
.095 gauge line		
SQ1095	.095, 1 lb. spool	325'
SQ3095	.095, 3 lb. spool	792'
SQ5095	.095, 5 lb. spool	1317'
.105 gauge line		
SQ3105	.105, 3 lb. spool	648'
SQ5105	.105, 5 lb. spool	1080'
ROUND LINE		
.095 gauge line		
RD1095	.095, 1 lb. spool	325'
RD3095	.095, 3 lb. spool	800'
RD5095	.095, 5 lb. spool	1401'
.105 gauge line		
RD1105	.105, 1 lb. spool	180'
RD3105	.105, 3 lb. spool	690'
RD5105	.105, 5 lb. spool	1149'



PIVOTRIM® TRIMMER LINE NEW!

Part #	Size
.095 gauge line	
P19037	24 pack of 12" line
P19039	100 pack of 12" line
.105 gauge line	
P19038	24 pack of 12" line
P19040	100 pack of 12" line



PRE-CUT KWIK LINE - 8"

Part #	Gauge	Pack Size
KB09548	.095	50 pcs.
KB10548	.105	50 pcs.
KB13048	.130	30 pcs.
KB15548	.155	25 pcs.



GRASS/BRUSHCUTTER BLADES

Part #	No. Teeth	Diameter In./MM	Bore In./MM	Thickness
BB4413*	3	10"/254mm	1"/25mm	2.25mm
BB9741	3	10"/254mm	1"/25mm	3.0mm
BB4414*	3	12"/305mm	1"/20mm	2.25mm
BB9743	3	12"/305mm	1"/25mm	4.0mm
BB7854*	4	8"/203mm	1"/25mm	1.5mm
BB7855*	4	9"/229mm	1"/25mm	1.8mm
BB4280	4	10"/254mm	1"/25mm	1.8mm
BB4279	8	10"/254mm	1"/25mm	1.8mm
BB7862*	8	8"/203mm	1"/25mm	1.5mm
BB7863*	8	9"/229mm	1"/25mm	1.8mm
BB4278	80	10"/254mm	1"/25mm	1.8mm
BB4400	80	9"/229mm	1"/25mm	1.8mm
BB4405	80	9"/229mm	3/4"/19mm	1.8mm
BB5957	80	8"/203mm	1"/25mm	1.8mm
BB5959	80	8"/203mm	3/4"/19mm	1.8mm



* includes reducer bushing 3/4"/20m

GRASS/BRUSHCUTTER BLADES - Professional Cutting Blades

Part #	No. Teeth	Diameter In./MM	Bore In./MM	Thickness
Maxi Series				
BB7856	22	8"/203mm	1"/25mm	1.5mm
BB7857	24	9"/229mm	1"/25mm	1.8mm
BB8389	22	8"/203mm	3/4"/19mm	1.5mm
BB8391	24	9"/229mm	3/4"/19mm	1.8mm
XRT Series				
BB7858	20	8"/203mm	1"/25mm	1.5mm
BB7859	22	9"/229mm	1"/25mm	1.8mm
BB8388	20	8"/203mm	3/4"/19mm	1.5mm
BB8390	22	9"/229mm	3/4"/19mm	1.5mm
EIA Series				
BB8458	22	8"/203mm	3/4"/20mm	1.5mm
BB8459	22	8"/203mm	1"/25mm	1.5mm
BB8460	24	9"/229mm	3/4"/20mm	1.8mm
BB8461	24	9"/229mm	1"/25mm	1.8mm



Trimmer/Blower Parts & Accessories



ECHO

Part # E226

- Air filter
- Fits blowers PB403, PB413, PB603, PB611 & PB650, PB620

Replaces **Echo A226000031**
\$3.95 ea., \$2.80 for 5 or more



Part # E228

- Air filter
- Fits GT2000, GT1100 and GT2400 trimmers
- Fits ES2100, ES2400 shredders and vacs
- Fits HC1500, HC2000, HC2400, HC2410, SRM265 hedge trimmers
- 2-5/8" L x 2-5/8" W x 1/4" hole dia.

Replaces **Echo 130310-54130**
\$4.95 ea., \$3.25 for 5 or more



Part # E229

- Air filter
- Fits PE2400 & PE2601 stick edgers
- Fits SRM1501, SRM2301 & SRM2400 trimmers
- Fits SHC2400, HC1000 - HC2100 hedge clippers
- 2-1/2" w x 2-1/4" top x 2-5/8" bottom x 1/16" thick

Replaces **Echo 130310-04560**



Part # E230

- Air filter
- Fits model SRM2500 trimmers
- 3-5/16" L x 3" top x 3-1/4" bottom x 1/16" thick

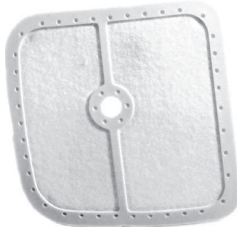
Replaces **Echo 130310-51730**



Part # E231

- Air filter
- Fits models SRM2400/SB, SRM2400, SRM2601, SRM3110, SRM3400, SRM3800, SRM 3100SB trimmers
- Fits models PB2400 & PB24LM blowers
- Fits models SHC2400 & HGA2400 clippers
- Fits model STS2400 pruner
- 3-1/8" x 3-1/8" x 1/4" hole

Replaces **Echo 130310-51830**



Part # E227

- Pre-oiled foam air filter
- Backpack blowers
- Use with heavy duty filter kit
- Fits Echo PB400E, John Deere 4 and 4E
- Toro 40 cc blowers
- 7" L

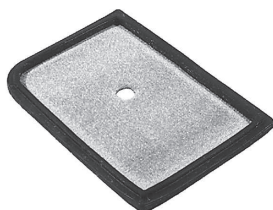
Replaces **Echo 130310-00760;**
John Deere PT8376



Part # E232

- Air filter
- Model PB210E
- John Deere blower # 2 E
- 4" L x 2-7/8" W

Replaces **Echo 130310-03360;**
John Deere PT10281



ECHO continued

Part # E836

- Air filter
- Model PB4600 & PB6000, PB460, LN, PB461, PB601, PB602, PB75DH, T, PB755 H, T backpack blowers
- 10-1/2" L x 3" W x 1-1/2" H

Replaces **Echo 13030508360, 1030508361**
\$4.95 ea., \$3.99 for 5 or more



Part # E260

- Air filter
- Model PB4600 backpack blower
- Use with our part # E836
- 10-1/2" L x 3" W x 3/4" H

Replaces **Echo 130310-08260**



Part # P11800

- Straight extension tube
- Fits PB4600-PB6000 blowers
- 17" length

Replaces **Echo 21001503460**



Part # P11801

- Curved extension tube
- Fits PB4600-PB6000 blowers
- Length: 13"

Replaces **Echo 21002303460**



Part # P8572

- Flex-pipe
- Fits Echo backpack blower model PB400E
- 17-1/4" L x 2-3/4" ID x 2-3/8" ID

Replaces **Echo 210012-01112**



Part # ECV137

- Fuel tank grommet

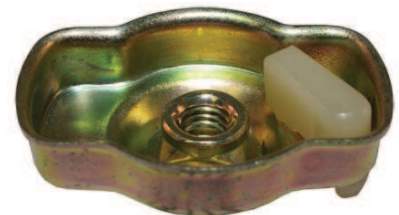
Replaces **Echo V137000030**



Part # EC13172

- Starter Pawl Assembly

Replaces **Echo A052000160,** and **Stihl**
NEW!



Part # TC12505

- Throttle cable
 - Conduit Length: 13-1/4"
 - Cable Length: 16-7/8"
- Replaces **Echo 178001-0893-1**



Part # TC12508

- Throttle cable
 - Fits Echo trimmer models SRM230
 - Conduit Length: 17-1/8"
 - Cable Length: 19-5/16"
- Replaces **Echo V430000730**



Part # TC12506

- Throttle cable
 - Fits Echo trimmer models PR260 & SRM260
 - Conduit Length: 15-5/16"
 - Cable Length: 17-5/8"
- Replaces **Echo V430000140**



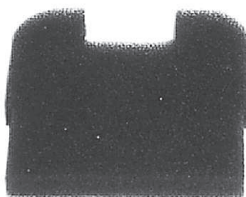
Part # TC13300

- Dual Compartment Spool
 - Fits Echo trimmer head 21560030
 - 6 prong replacement spool
- Replaces **Echo Po22006770**
NEW!



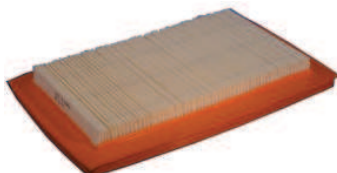
Part # RE55509

- Air filter
 - For trimmers
 - Red Max BC260
 - Pre-oiled foam
 - 2-1/2" x 2-1/4" x 3/8"
- Replaces **Red Max 16010-82311, 1601-82310**



Part # RE310

- Air filter
 - EB7000 blower
- Replaces **Red Max T4012-82310**
\$6.85 ea., \$4.95 for 5 or more



Part # RE30955

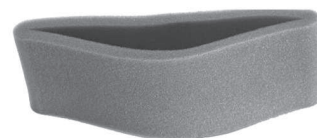
- Air filter
 - EB7000 blower
 - Pre-oiled foam
- Replaces **Red Max T4012-82320**



RED MAX continued

Part # RE30067

- Air filter
 - BC2300DL, BC2600DL trimmers
 - Pre-oiled foam
- Replaces **Red Max # 550-82171**



Part # P9360

- Flexible blower hose
 - Fits models EB430, 431, 441 blowers
- Replaces **Red Max 3495-51110**



SHINDAIWA

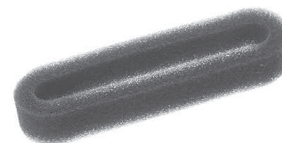
Part # P30722

- Air filter assembly
 - For models C35 and B45
- Replaces **Shindaiwa 20040-81700, 20040-8170**



Part # P50170

- Air filter
 - Fits models T18, F18, T230, C230, LE230 & T230XB trimmers
 - 3-7/16" L x 13/16" W x 1/2" H
- Replaces **Shindaiwa 70064-82210**



Part # P30721

- Air filter
 - T230 and T231 trimmers
 - 2-1/2" L x 1-7/8" W x 3/8" H
- Replaces **Shindaiwa 60023-98031**



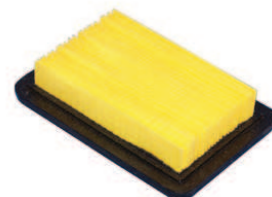
Part # P12024

- Air filter
 - Fits model T-230 trimmers
- Replaces **Shindaiwa 20018-81750**



Part # P11641

- Air filter
 - Fits model EB8510 backpack blower
- Replaces **Shindaiwa 68900-82120**
\$8.95 ea., \$6.95 for 5 or more



Trimmer/Blower Parts & Accessories



SHINDAIWA continued

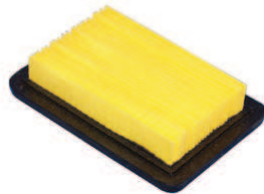
Part # P11642

- Pre-filter
 - Fits model EB8510 4-cycle backpack blower
 - Use with our part # 11641
- Replaces **Shindaiwa 68900-82320**



Part # AF2899

- Air Filter
 - Fits models EB802, EB802RT, EB8520 and EB8520RT
 - 3-5/8" W x 5" L x 1-13/16" H
 - Uses our AF2903 pre-filter
- Replaces **Shindaiwa 68242-82120**



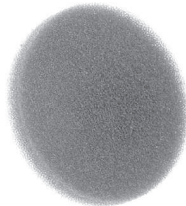
Part # AF2903

- Pre-filter
 - Fits our part # AF2899
- Replaces **Shindaiwa 68242-82310**



Part # P50184

- Air filter
 - Fits Shindaiwa models T25 & LT20
 - Fits Green Machine model 3000SS
 - 2-3/8" OD x 1/2" H
- Replaces **Shindaiwa 2000-81740**;
Green Machine 30981; **Robin 1082**;
Stihl 4114-124-0800



Part # TC8673

- Throttle lever with trigger lock
 - Fits most Red Max, Green Machine and Shindaiwa trimmers.
 - Fits 7/8" OD handles
- Replaces **Shindaiwa 72910-14320**



Part # TC12509

- Throttle cable
 - Fits Shindaiwa trimmer models C270 and T270
 - Conduit Length: 39-11/32"
 - Cable Length: 42-9/32"
- Replaces **Shindaiwa 70105-83100**



STIHL

Part # S50182

- Air filter
 - Fits model FS80 trimmers
 - 2" OD x 3/8" H
- Replaces **Stihl 4112-124-0801**



STIHL continued

Part # AF249

- Air filter
 - Fits FS120, FS200, FS250, FS350, FS450
 - 3-7/16" L x 2-3/4" W x 1" H
- Replaces **Stihl 4134 141 0300**



Part # P11807

- Air filter
 - Fits BG75, FC75, FC85, FS75, FS80, FS85, FS85R, HL75K, HS80, HS85
 - 2-3/8" L x 2-3/8" W x 1/4" H
- Replaces **Stihl 4137 124 2800**
\$3.50 ea., \$2.99 for 5 or more



Part # S50183

- Air filter
 - Fits models FS74, 76, FC72, HD 72, 74, 76 & BG 72 trimmers
 - 2-7/16" L x 2-7/16" W x 1/4" H
- Replaces **Stihl 4137-124-1500**



Part # P110124

- Air filter
 - Fits FS100 trimmers
- Replaces **Stihl 4133-124-2800**



Part # P8716

- Air filter
 - Fits FS74, 76, FC72, 74, 76 and BG 72
 - 2-7/16" L x 2-7/16" W x 1/4" H
- Replaces **Stihl 41331241500, code 135263300**



Part # P110120

- Air filter
 - Fits FS90, FS100, FS110
- Replaces **Stihl 4180-120-1800**
\$4.59 ea.



Part # S4203

- Air filter
 - Fits models BR320 & BR400 backpack blowers
 - 1-3/4" ID x 2-7/8" OD x 1-5/8" H
- Replaces **Stihl 4203-141-0300**



Part # S50280

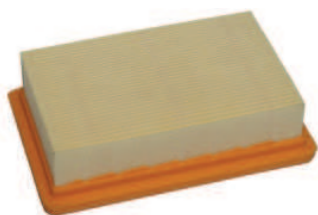
- Pre-filter for our part #S4203
- Replaces **Stihl 4203-141-0310**



STIHL continued

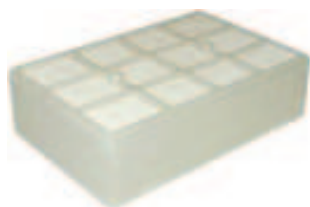
Part # S420

- Air filter
 - Fits models BR320, 340, 400 & 420 backpack blowers
 - 5-1/8" L x 3-1/2" W x 1-1/2" H
- Replaces **Stihl 4203-141-0301**
\$5.90 ea., \$4.90 for 5 or more



Part # P110203

- Air filter
 - Fits BR420 blower
 - Use with part # S420
- Replaces **Stihl 4203-120-1500**



Part # S421

- Air filter
 - Fits BR550 and BR600 backpack blowers
- Replaces **Stihl 4282-141-0300B**
\$8.95 ea., \$7.25 for 5 or more



Part # S4282

- Air filter
- Fits model SH55, BG45 -BG85 blowers; BR45C



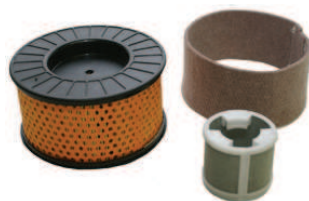
Part # P110206

- Air filter
 - Fits models FC55 Edger
 - FS45, FS55 Trimmers
 - HS45, HL45 Hedge Trimmers
- Replaces **Stihl # 4140-124-2800**



Part # P110237

- Air filter
 - Fits hedge trimmer HS81T
- Replaces **Stihl 4237-120-1800**



Part # P8791

- Blower hose
 - Fits models BR400, 106, 320
- Replaces **Stihl 42037016102**



STIHL continued

Part # BR6310

- Blower end tube
 - Fits BR550, BR600 blowers
- Replaces **Stihl 4282-708-6310**



Part # CA4282

- Carburetor
 - Fits BR550 backpack blower
- Replaces **Stihl 4282-120-0602**



Part # 110700

- Fuel line
 - Fits BR400 backpack blower
- Replaces **Stihl 1111-358-7700**



Part #155085

- Cylinder Assembly
 - Fits model FS85
- Replaces **Stihl 4205-020-1200**
NEW!



Part # ST13582

- Starter recoil assembly
 - Fits models KM90, KM100, KM110, FS90, FS100, FS110, FS130, FC90, FC100, FC110 and FC130
- Replaces **Stihl 4180-190-4000**
NEW!



Part # ST13529

- Starter recoil assembly
 - Fits models BR500, BR550, BR600
- Replaces **Stihl 4282-190-0300A**
NEW!



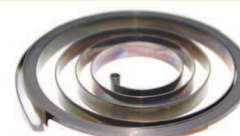
Part # ST13580

- Starter recoil assembly
 - Fits models BBR320, BR340, BR380, BR400, BR420 blowers
- Replaces **Stihl 4203-190-0405**
NEW!



Part # 110194

- Recoil spring
 - Fits BR550
- Replaces **Stihl 4282-190-0600**



STIHL continued

Part # ST42821950200

- Recoil Spring
 - Fits BR500, BR550, BR600 blowers
- Replaces *Stihl* 4282-195-0200

NEW!



Part # 110195

- Rewind spring
 - Fits FC85 trimmer
- Replaces *Stihl* 4133-195-1600



Part # 110190

- Rewind starter
 - Fits FS85 trimmer
- Replaces *Stihl* 4137-190-4000



Part # ST12914

- Fits models FS72, FS74, FS76 trimmers
- Fits HS72, HS74, HS76 hedge trimmers
- Fits FC72 edgers,
- Fits BG72, BG75 blowers

Replaces *Stihl* 4133-1295-1600

NEW!



Part # 110185

- Elbow connector
 - Fits BR400 backpack blowers
- Replaces *Stihl* 1111 353 2500



Part # TC12503

- Throttle cable
 - Fits Stihl line trimmer models FS75-FS85
- Replaces *Stihl* 4137-180-1109



Part # TC12501

- Throttle cable
 - Fits Stihl brushcutter
- Replaces *Stihl* 4119-180-1101



STIHL continued

Part # TC12504

- Throttle cable
 - Fits Stihl line trimmers
 - Conduit Length: 33-15/32"
 - Cable Length: 44-11/16"
- Replaces *Stihl* 4137-180-1100



Part # TC12500

- Throttle cable
 - Fits Stihl brushcutters models FS120, 120R, 200, 200R, 250, 250R
 - Conduit Length: 33-1/6"
 - Cable Length: 38-5/16"
- Replaces *Stihl* 4128-180-1104



Part # TC12499

- Throttle cable
 - Fits Stihl line trimmers
 - Conduit Length: 33-1/2"
 - Cable Length: 41-13/16"
- Replaces *Stihl* 4180-180-1101



Part # TC12502

- Throttle cable
 - Fits Stihl blower models BR500, BR550, BR600
 - Conduit Length: 46-1/4"
 - Cable Length: 51"
- Replaces *Stihl* 4282-180-1100



Part # TH2191

- Trimmer Head
 - Fits Auto-Cut 25-2
- Replaces *Stihl* 4002-710-2191



Part # TH3017

- Trimmer spool
 - Fits Auto-Cut 25-2
- Replaces *Stihl* 4002-713-3017



Part # TH9708

- Trimmer Head Cover
 - Fits Auto-Cut 25-2
- Replaces *Stihl* 4002-713-9708



STIHL continued

Part # TH2191-1

- Spring
 - Fits Auto-Cut 25-2
- Replaces *Stihl* 0000-997-1501
NEW!



Part # TH2191-2

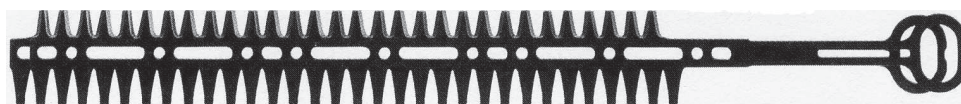
- Eyelet
 - Fits Auto-Cut 25-2
- Replaces *Stihl* 4003-713-8301
NEW!



HEDGE TRIMMER PARTS

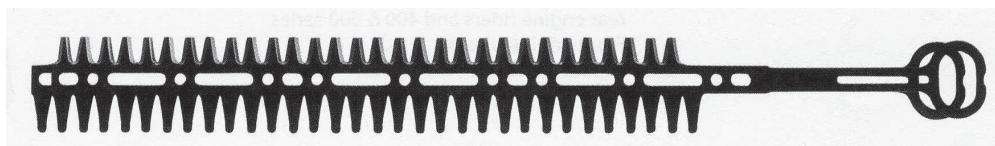
Part # P59200

- Blade set
 - For HS45 18" trimmers
- Replaces *Stihl* 4228-710-6050A
NEW!



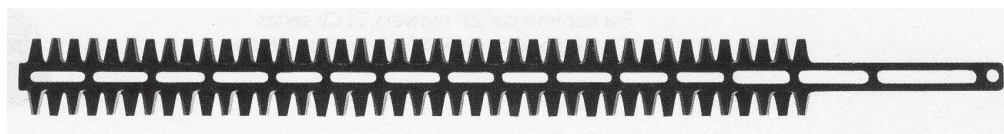
Part # P59201

- Blade set
 - For HS45 24" trimmers
- Replaces *Stihl* 4228-710-6051A
NEW!



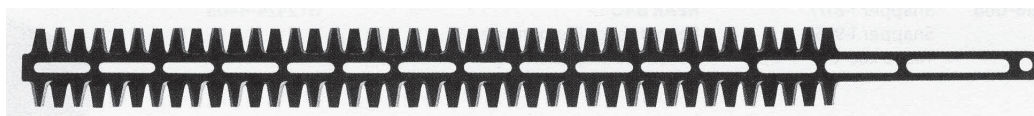
Part # P59202

- Blade Set
 - For HS81T 24" model Stihl trimmers
 - For trimming and sculpting
- Replaces *Stihl* 4237-710-6051
NEW!



Part # P59203

- Blade set
 - For HS81T 30" "T" model Stihl trimmers
 - For trimming and sculpting
- Replaces *Stihl* 4237-710-6052
NEW!



KOHLER

Part #	Application	Contents/OE #
20-780-01 NEW!	For Courage single cylinders	Air Filter: 20-083-02 Pre-Filter: 20-083-03 Oil Filter: 52-050-02 Fuel Filter: 25-050-21 Spark Plug: 12-132-02 Oil (2): 25-357-06
25-789-01 NEW!	For HD A/C equipped engines	Heavy Duty Air Filter: 20-083-01 Oil Filter: 52-050-02 Fuel Filter: 24-050-13 Spark Plugs (2): 12-132-02 Oil (2): 25-357-06
24-789-02 NEW!	For 11 thru 16 HP Command Pro single cylinder CV11-CV16	Air Filter: 24-083-03 Pre-Filter: 24-083-05 Oil Filter: 52-050-02 Fuel Filter: 24-050-13 Spark Plugs (2): 12-132-02 Oil (2): 25-237-06
32-789-01 NEW!	For Courage twin cylinders	Air Filter: 32-083-03 Pre-Filter: 52-050-02 Oil Filter: 52-050-02 Fuel Filter: 25-050-22 Spark Plugs (2): 12-132-02 Oil (2): 25-357-06
12-789-02 NEW!	For 11 thru 16 HP Command Pro single cylinder CV11-CV16	Air Filter: 12-083-10 Pre-Filter: 12-083-12 Seal: 12-032-11 Wing Nut: 12-100-08 Oil Filter: 52-050-02 Fuel Filter: 24-050-22 Spark Plugs: 12-132-02 Oil (2): 25-237-06
24-789-02 NEW!	For 18 thru 28 HP Command twin cylinder CV20-CV26, CH18-CH26, CV724-CV740, CH730-CH745	Air Filter: 47-083-03 Pre-Filter: 24-083-02 Oil Filter: 12-050-01 Fuel Filter: 24-050-22 Spark Plugs (2): 12-132-02 Oil (2): 25-357-06



AERATOR PARTS

Part # AE10

- Tine, lock washer & nut
- Replaces *Aera-Vator AE50-058* (tine)
HW32020682P (lock washer),
HW20020G5PLF (nut)
\$4.95 ea., \$4.25 for 90+



Part # AE101

- Tine only
- Replaces *Aera-Vator AE50-058*



Part # BE10

- Belt
- Fits Aera-Vator



Part # AE11

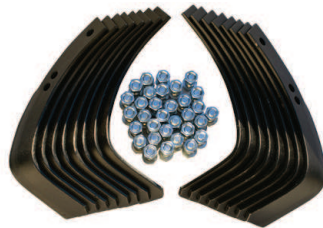
- Closed spoon
 - Fits models 424, 530A and 742
 - 7-5/8" L x 3/4" hole size
 - .900" mounting diameter
- Replaces *Ryan 522361, Bluebird 7190*
\$5.25 ea., \$3.50 for 36+



TILLER PARTS

Part # P84101

- Tiller tine set
 - For Pony & Horse model tillers
 - Includes 8 RH and 8 LH bolo tines
 - Includes hardware
- Replaces *Troy Bilt 1901118*
NEW!



Part # P84102

- Tine RH
 - For Pony & Horse models
- Replaces *Troy Bilt 1270-1A, AYP 6554J, 4459J*
NEW!



Part # P84103

- Tine LH
 - For Pony & Horse models
- Replaces *Troy Bilt 1270-2A, AYP 6555J, 44601J*
NEW!



Part # P49050

- Tine Axle Seal
 - For Horse model tillers
 - 1.250" ID x 2" OD, Thickness 1/2"
- Replaces *Troy Bilt 9618*
NEW!



Part # P49051

- Wheel Axle Seal
 - For Horse model tillers
 - 1" ID x 1.5" OD, Thickness 3/8"
- Replaces *Troy Bilt 9621*
NEW!



RYAN AERATOR LAWNIRE IV/V PARTS

Part # RY2703341.7

- Bellcrank
- Replaces *Ryan 2703341.7*
NEW!

**NO
ART
AVAILABLE**

Part # RY548942

- Idler Pulley
 - 3-1/4" OD
- Replaces *Ryan 548942*
NEW!



Part # RY4114319

- Belt
- Replaces *Ryan 4114319*
NEW!



Part # RY521608

- Pulley
 - 4" OD
- Replaces *Ryan 521608*
NEW!



Part # RY521609

- Pulley
 - 10" OD
- Replaces *Ryan 521609*
NEW!



Part # RY548962

- Bearing Housing
- Replaces *Ryan 548962*
NEW!



Part # RY521856

- Ball Bearing
- Replaces *Ryan 521856*
NEW!



Part # RY521857

- Bearing Locking Collar
- Replaces *Ryan 521857*
NEW!



RYAN AERATOR LAWNNAIRE IV/V PARTS cont.

Part # RY64141-6

- Nut
- 5/16"-18

Replaces *Ryan 64141-6*
NEW!



Part # RY64164-19

- Key
- Replaces *Ryan 64164-19*
NEW!



Part # RY2702738

- Jack Shaft
 - Lawnnaire IV only
- Replaces *Ryan 2702738*
NEW!



Part # RY2703101

- Jack Shaft
 - Lawnnaire V only
- Replaces *Ryan 2703101*
NEW!



Part # RY548201

- Set Screw
- Replaces *Ryan 548201*
NEW!



Part # RY841261

- Sprocket
- Replaces *Ryan 841261*
NEW!



Part # RY2703185

- Throttle Control
- Replaces *Ryan 2703185*
NEW!



Part # RY64163-29

- Washer
- Replaces *Ryan 64163-29*
NEW!



RYAN AERATOR LAWNNAIRE IV/V PARTS cont.

Part # RY4113746

- Spring
- Replaces *Ryan 4113746*
NEW!



Part # RY4113841

- Connecting Link
- Replaces *Ryan 4113851*
NEW!



Part # RY2703611

- Chain with Connector
- Replaces *Ryan 2703611*
NEW!



Part # RY822474

- Spacer
- Replaces *Ryan 822474*
NEW!



Part # RY64163-61

- Washer
- Replaces *Ryan 64163-61*
NEW!



Part # RY548960

- Idler Sprocket
- Replaces *Ryan 548960*
NEW!



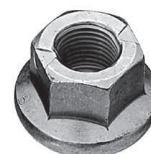
Part # RY64262-014

- Flange Head Bolt
- Replaces *Ryan 64262-014*
NEW!



Part # RY800531

- Hex Crown Lock Nut
- Replaces *Ryan 800531*
NEW!



RYAN AERATOR LAWNAIRE IV/V PARTS cont.

Part # RY4115632

- Knob, 2-1/2"
- Replaces *Ryan 4115632*
- NEW!**



Part # RY4114101

- Adjustment Rod
- Replaces *Ryan 4114101*
- NEW!**



Part # RY306372

- Cotter Pin
- Replaces *Ryan 306372*
- NEW!**



Part # RY823225

- Clevis Pin
- Replaces *Ryan 823225*
- NEW!**



Part # RY304636

- Cotter Pin
- Replaces *Ryan 304636*
- NEW!**



Part # RY4124192

- Semi-Pneumatic Wheel
- 8x2.5
- Replaces *Ryan 4124192*
- NEW!**



Part # RY4113972.7

- Chain Cover
- Replaces *Ryan 4113972.7*
- NEW!**



Part # RY821274

- Drain Plug
- Replaces *Ryan 821274*
- NEW!**



RYAN AERATOR LAWNAIRE IV/V PARTS cont.

Part # RY2703783

- Water Drum
- Lawnaire IV only
- Replaces *Ryan 2703783*
- NEW!**



Part # RY2703785

- Water Drum
- Lawnaire V only
- Replaces *Ryan 2703785*
- NEW!**



Part # RY800606

- Carriage Bolt
- Replaces *Ryan 800606*
- NEW!**



Part # RY2701410

- 3/4 Closed Spoon
- Replaces *Ryan 2701410*
- NEW!**



Part # RY2702742.7

- Tine Wheel
- Lawnaire IV Only
- Replaces *Ryan 2702742.7*
- NEW!**



Part # RY2703004.7

- Tine Wheel
- Lawnaire V Only
- Replaces *Ryan 2703004.7*
- NEW!**



Part # RY2703160.7

- Sprocket
- Replaces *Ryan 2703160.7*
- NEW!**



Part # RY64139-08

- Bolt
- Replaces *Ryan 64139-08*
- NEW!**



RYAN AERATOR LAWNAIRE IV/V PARTS cont.

Part # RY64018-9

- Carriage Bolt
- Replaces *Ryan 64018-9*
- NEW!**

NO
ART
AVAILABLE

Part # RY2703508

- Flange Bearing
- 2.04" ID
- Replaces *Ryan 2703508*
- NEW!**

NO
ART
AVAILABLE

Part # RY545786

- Bearing Assembly
- Replaces *Ryan 545786*
- NEW!**



Part # RY2703157.7

- Sprocket
- Replaces *Ryan 2703157.7*
- NEW!**



Part # RY306932

- Nut
- Replaces *Ryan 306932*
- NEW!**



Part # RY522480

- Gasket
- 4-1/2"
- Replaces *Ryan 522480*
- NEW!**

NO
ART
AVAILABLE

Part # RY54587

- Split Ring
- Replaces *Ryan 545887*
- NEW!**

NO
ART
AVAILABLE

Part # RY2703102.7

- Drum Drive
- Lawnaire IV Only
- Replaces *Ryan 2703102.7*
- NEW!**



RYAN AERATOR LAWNAIRE IV/V PARTS cont.

Part # RY2703108.7

- Drum Drive
- Lawnaire V Only
- Replaces *Ryan 2703108.7*
- NEW!**



Part # RY522481

- Gasket
- 3"
- Replaces *Ryan 522481*
- NEW!**

NO
ART
AVAILABLE

Part # RY270274.17

- Flange Plate
- Replaces *Ryan 270274.17*
- NEW!**



Part # RY280/250-4

- Rear Tire
- NEW!**



Part # RY8441

- Bearing Kit
- Pneumatic
- NEW!**



Part # RY327

- Bearing Kit
- Solid Tires
- NEW!**

